



G027V1.2

UK

GENERAL FITTING INSTRUCTIONS FITTED

Important :

- Unpack the units carefully ensuring not to scratch them with the knife blade. Inspect every item carefully before installation as no claim for faults or damages will be accepted once the item is installed.
- We recommend that you use protection (for example a blanket) to cover the working area. Mirrors and worktops are very fragile, we recommend that you put them on battens (and never directly onto the floor).
- Our furniture is designed to be fitted on a level, flat finished wall.
- It is imperative that you use a sanitary grade silicone sealant at the back and sides of every worktop as water infiltrations will damage your unit and this is not covered under our product guarantee.
- All surfaces of all units should not be exposed to standing water or persistent humidity. They must be wiped and dried off immediately after use. If your unit is not cared for correctly it will deteriorate and this will not be covered under our product guarantee.
- All our units are guaranteed for 10 years* from date of invoice (1 year for mirrors, electrical items, cisterns, WC frames, sanitary ware, taps and accessories) against all manufacturing defects acknowledged by our company, limited to domestic users.
- The guarantee does not apply to any products that have been misused or abused in any way. The products must be installed and cared for in line with our fitting instructions, local water byelaws, IEE electrical directives and any other applicable regulations.
- In the unlikely event that the product fails within 10 years* (1 year for mirrors, electrical items, cisterns, WC frames, sanitary ware, taps and accessories), we offer a free of charge replacement part (or nearest equivalent). Liability is limited to individual products and does not cover consequential loss/damage or any further unfitting/refitting costs or financial compensation. The customer will be required to pay for the installation cost of the replacement part.

*Refer to general terms of sale

MAINTENANCE:

- Rinse and wipe the surface of the furniture after contact with any chemical product.
- Do not use abrasive cream (cif, etc...), wire wool, scouring pad, solvent, acid, etc...
- Dry the surface off with a soft cloth after cleaning
- For mirrors, use a chamois leather, and dry the edges with a suitable soft cloth.
- Use a dry cloth to clean any electric components, they must be switched off

OUR FURNITURE WILL DETERIORATE THROUGH EXCESSIVE WATER SPILLAGE OR HEAVY CONDENSATION. IT IS ADVISED THAT EVERY BATHROOM SHOULD BE WELL VENTILATED AND FITTED WITH A SUITABLE EXTRACTOR FAN TO AVOID ANY PERSISTENT HUMIDITY AND ALL FURNITURE SHOULD BE PROTECTED WITH BATH/SHOWER SCREEN ENCLOSURES TO PRESERVE THEIR QUALITY.

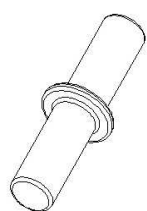
ELECTRICAL INSTALLATION:

All Ambiance Bain units fitted with electrical components (mirrors, mirrored cabinets, sockets, etc...) must only be installed in ZONE 3. Installation and fitting of all electrical items must be completed by a qualified electrician. Any final decisions regarding the installation should also be made by the electrician. All electrical items must be tested prior to installation, as liability is limited to replacement items only.

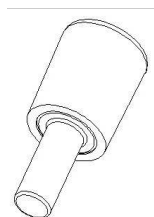
All information is downloadable from the website www.ambiancebain.co.uk

Ab
ambiance bain

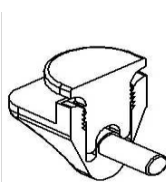
SPARE PART BOX CONTENT



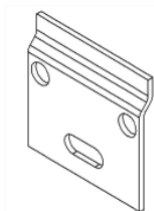
0186



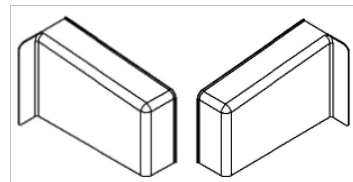
0187



0185



0008

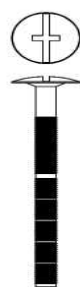


0004

0003



0234



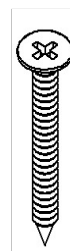
0236



0221



0223



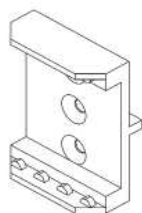
0235



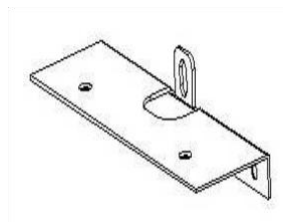
0232



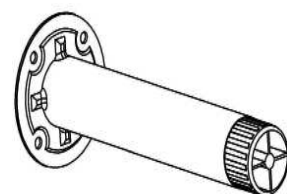
0051



0178



0063

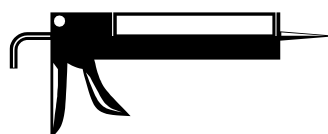


0266

*CHECK SPARE PARTS BOX QUANTITY



TOOLS REQUIRED



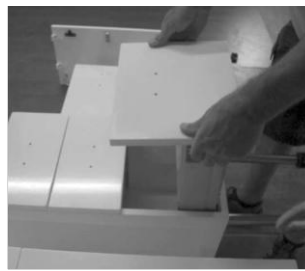
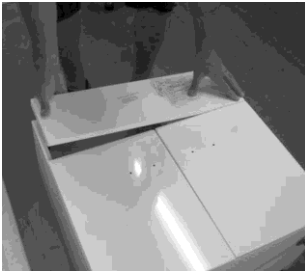
Ab

ambiance bain

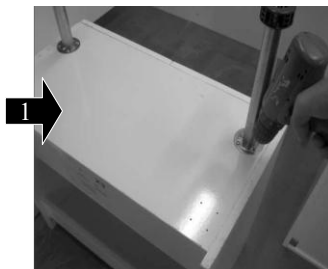
INSTALLATION OF THE UNITS

3

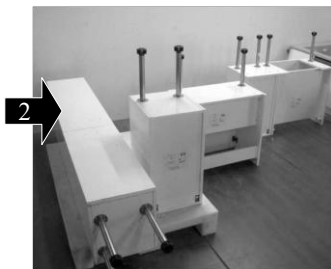
- 1** REMOVE THE DOORS, DRAWERS AND FIXED FASCIA FROM ALL THE UNITS, SEE SEPARATE INSTRUCTIONS ENCLOSED



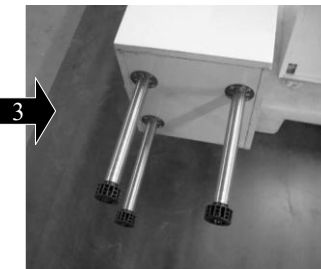
- 2** SCREW THE FEET TO EACH UNIT «feet 0266» «screw 0221»



1 Screw the feet into the pre-drilled position



2 Two feet on the front of each unit



3 Three feet for a unit with a plinth return



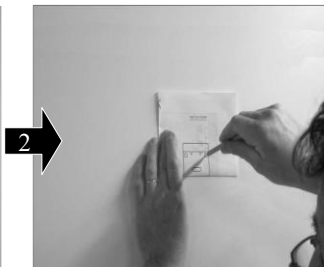
CAUTION:

Adjust the feet by turning the black plastic foot (adjust height according to plinth 150 or 270 mm)

- 3** FIX THE WALL PLATES «0008» (screws and wall plugs not included)



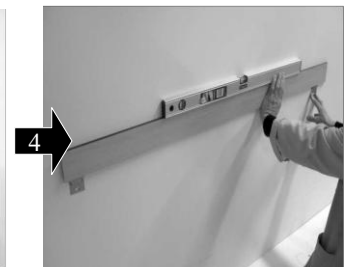
1 Determine the finished height



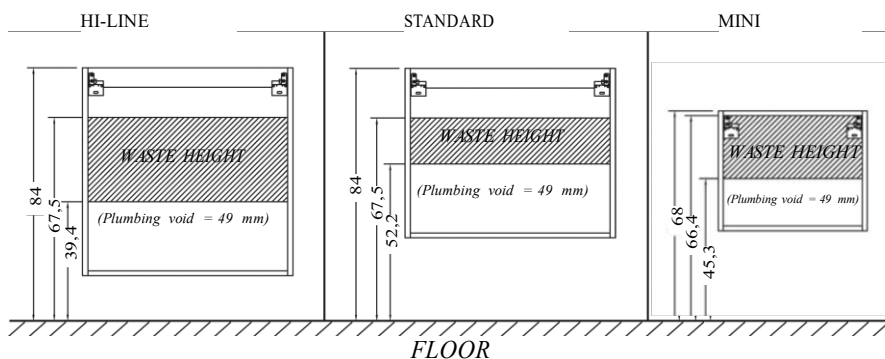
2 Position the template, mark and drill



3 Fix the first wall plate

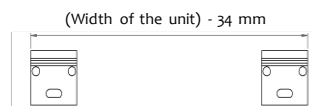


4 Position the second wall plate aligning it with the first one and repeat for all of the wall plates

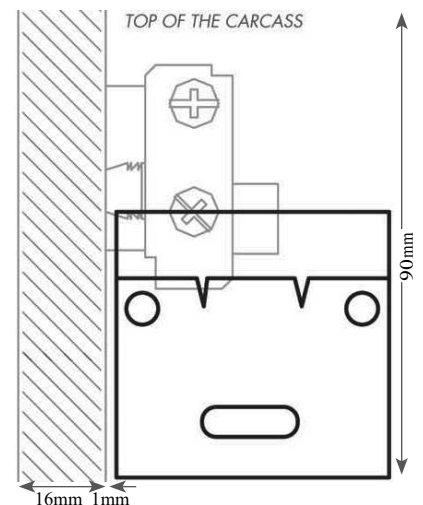


CAUTION:

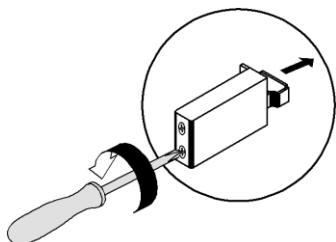
Ensure that you use the correct fixing according to the type of wall construction. Fix all the wall plates



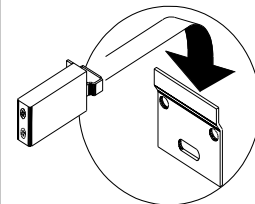
All dimensions are in mm.



4 LOOSEN THE WALL HANGING BRACKETS ON THE UNIT



5 HANG THE UNITS ONTO THE WALL PLATES



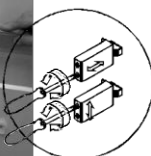
6 TIGHTEN THE BRACKETS ON THE UNIT SO THAT THE FURNITURE FITS TO THE WALL AND ADJUST THE LEVELS



1 Tighten the units to the wall



2 Adjust levels



3 Screw feet down to the floor



4 Adjust front to back levels

7 FIT THE WALL HANGING BRACKET COVERS «0003 and 0004»

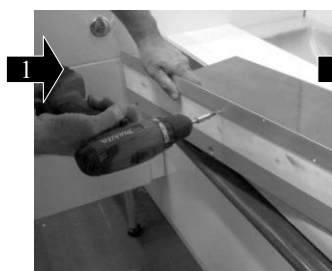


8 SCREW FURNITURE TOGETHER screw «0234»



ADVICE:
Clamp the furniture together. Use a screw at each corner.

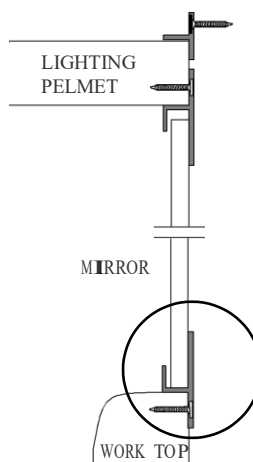
9 FIXING THE BOTTOM MIRROR RAIL «screw 0223»



1 Fix the rail onto the rear of the worktop



2 Position the worktop on the unit and against the wall

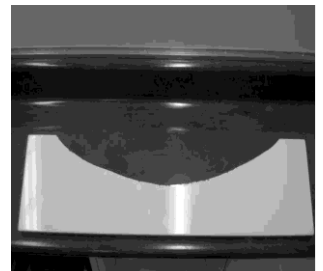
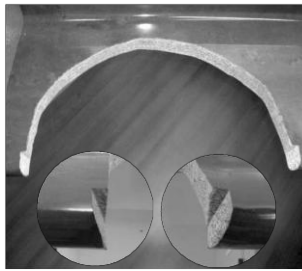
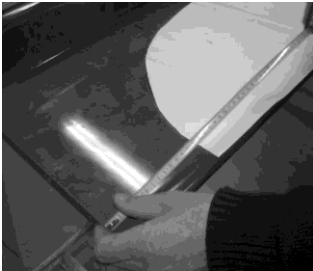


For a resin worktop the rail must be siliconed when you put the worktop in place



FAILURE TO APPLY SILICONE SEALS
WILL INVALIDATE ANY PRODUCT
WARRANTY

10 CUT OUT FOR THE BASIN

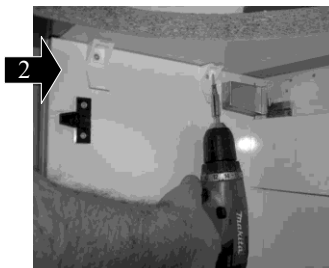


Following the manufacture's instructions lay the template in the desired position and then draw around it. For a semi-counter top basin, both the worktop and the fascia have to be cut. Remember to allow for the worktop thickness when marking and cutting front fascia.

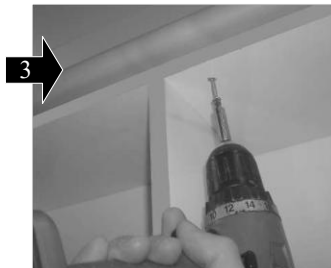
11 laminate worktop INSTALL THE WORKTOP (laminate)



1 Place worktop on the units



2 Fix worktop to units using «screw 0223» for the basin unit



3 Fix worktop to units using «screw 0235» for the drawer unit (it is advice to pre drilled the unit)



4 Apply silicone seal to all worktop edges including underside to carcass

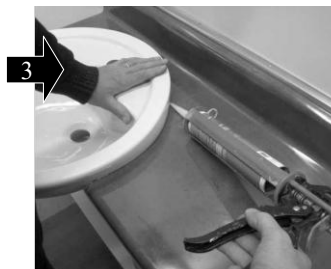
INSTALL THE BASIN



1 Apply silicone sealant to raw worktop edge to seal



2 Fix basin into worktop with manufacturers brackets or silicone



3 Apply silicone seal to joints



4 Apply silicone seal to front fascia

12 resin worktop INSTALL RESIN WORKTOP



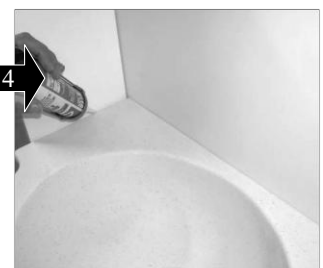
1 Install the overflow provided (it is advisable to fit the tap immediately after this step)



2 Make a suitable silicone seal onto the front of the unit

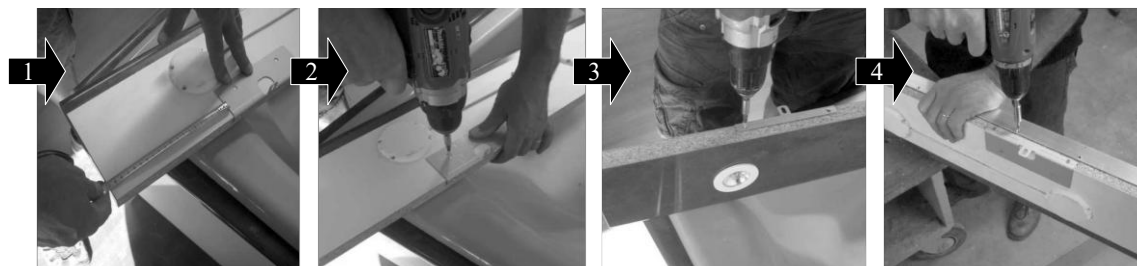


3 Position the worktop onto the units



4 Once installed, a suitable silicone seal should be applied between the basin and the top of unit and along back and sides of basin and to front fascia to prevent water infiltration.

13 FIX THE BRACKETS AND THE UPPER MIRROR RAIL ONTO THE LIGHTING PELMET

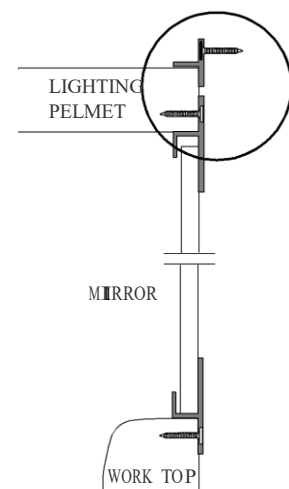


1 Fix the bracket at 15 cm from the edge of the lighting pelmet

2 Screw the brackets on the top of the lighting pelmet «screw 0223»

3 Screw the brackets into the rear of the lighting pelmet «screw 0235»

4 Screw the upper rail onto the rear of the lighting pelmet «screw 0235»



14 MARK AND DRILL THE HOLES TO FIX THE LIGHTING PELMET (wall plugs not included)



15 SET UP THE MIRRORS



1 Apply a small mirror safe silicone seal in the rail

2 Position the mirrors

16 FIX THE LIGHTING PELMET (screws and wall plugs not included)



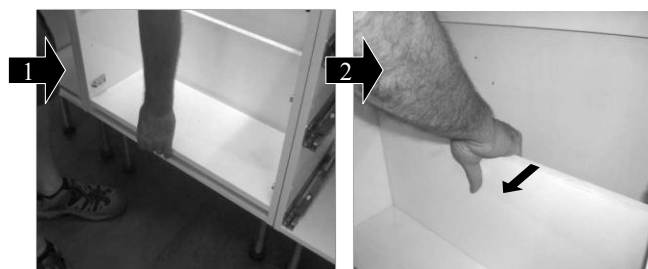
CAUTION:

Ensure that you use the correct fixing according to the type of wall construction.

17 CONNECT THE POWER SUPPLY (according to current regulations, the connection must be made by a qualified electrician)



18 PREPARATION OF BASIN UNIT PRIOR TO PLUMBING IN

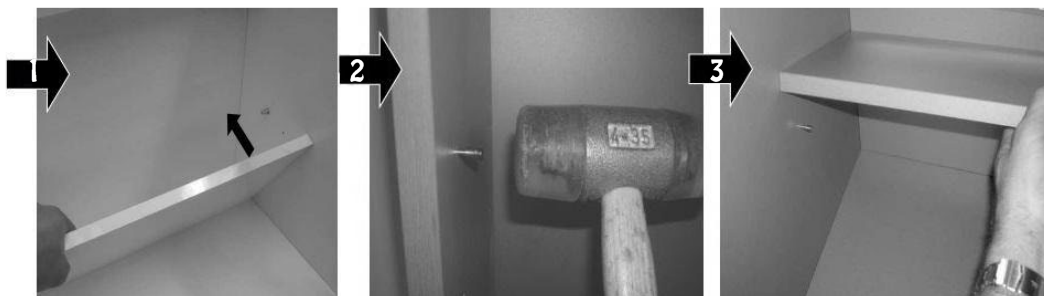


1 Remove the shelf.

2 Remove the back panel.

19 CONNECT THE PLUMBING, CHECK FOR LEAKS

20 INSTALLATION OF MELAMINE SHELF (pegs «0186»)



1 Refit the back panel (cut if necessary).

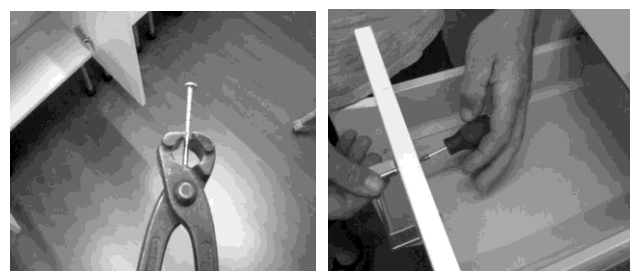
2 Fit the pegs provided.

3 Place the shelf on the pegs.

21 REFIT AND ADJUST THE DRAWERS OR DOORS, SEE SEPARATE INSTRUCTION ENCLOSED



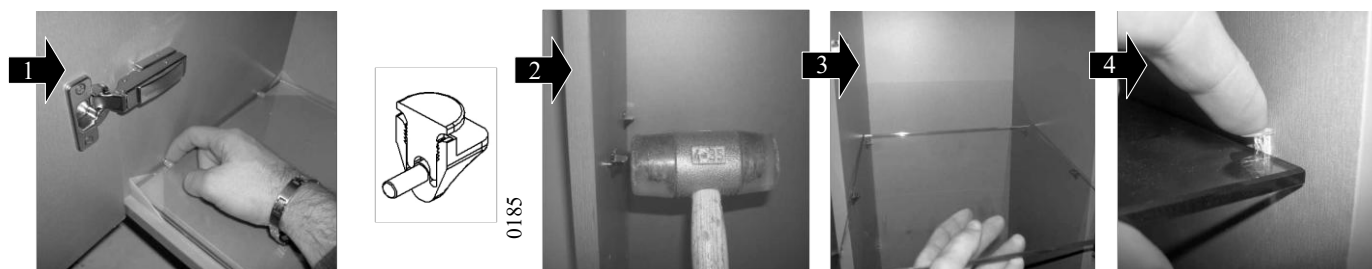
22 FIX THE HANDLES (screws «0236»)



Cut the screws to the correct length with cutting pliers

Fix the handle «BP» with the screws «0236»
The fascia is pre-drilled

23 FIT THE GLASS SHELVES (pegs «0185» for unit depth 22 cm and pegs «0187» for unit depth 33 cm)

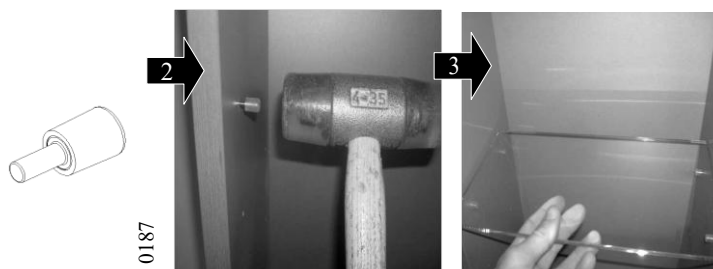


1 Remove packing pegs and discard.

2 Fit the pegs provided.

3 Place the shelf on the pegs.

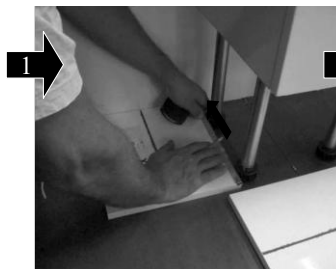
4 Clip the plastic insert down.



2 Fit the pegs provided.

3 Place the shelf on the pegs.

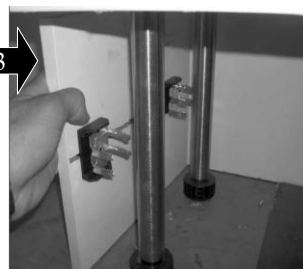
24 INSTALL THE PLINTH (If offset or rounded front units are used, see separate note below)



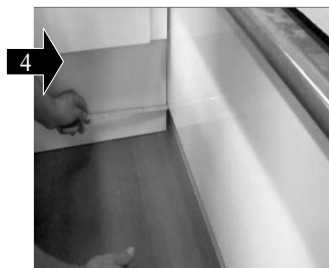
1 Measure and cut to size.



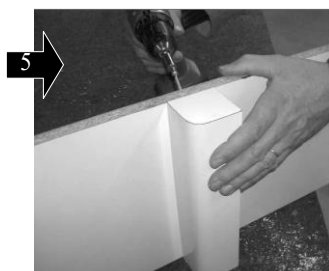
2 Line up black clips «0178» with legs, knock into place with hammer.



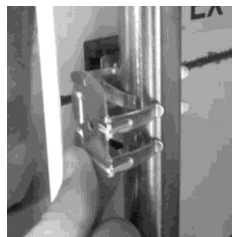
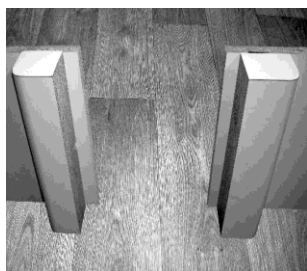
3 Slide metal clip «0051» into place and push plinth into place.



4 Where bath panel is fitted front plinth will have to be cut as shown above.



5 Cut the WC block and plinth to fit behind WC pan, after screw the two piece to the plinth using screw «0235»

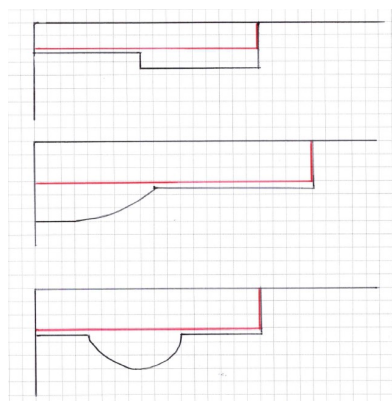


Corner clip detail

25 INSTALL THE PLINTH FOR OFFSET OR ROUNDED FRONT UNIT

1 PLINTH FITTING.

Please note – the predrilled leg positions will only work when the furniture is a straight run without cut back, curved or offset unit.
When a cut back, curved or offset unit is included in the order the plinth alignment should be set at the shallowed depth unit and then run parallel with the back wall under the other units. It will be necessary to reconfigure the leg positions on the other units to suit.
It is recommended this be worked out before the units are installed.



RED= PLINTH

Ab
ambiance bain

www.ambiancebain.com / www.ambiancebain.co.uk

AMBIANCE BAIN - BP206 - 07502 Guilherand-Granges Cedex - FRANCE AMBIANCE BAIN UK - 15 Cranford Court, Hardwick-Grange, Woolston, Warrington, Cheshire, WAI-4RX