



C147V1.1 VENUS

UK

FITTING INSTRUCTIONS

IMPORTANTPAGE 1

CABINET

INSTALLATION BASIN UNIT.....PAGE 2 A 5

Important:

- Unpack the units carefully ensuring not to scratch them with the knife blade. Inspect every item carefully before installation as no claim for faults or damages will be accepted once the item is installed.
- We recommend that you use protection (for example a blanket) to cover the working area.
- Mirrors and worktops are very fragile, we recommend that you put them on battens (and never directly onto the floor).
- Our furniture is designed to be fitted on a level, flat finished wall.
- It is imperative that you use a sanitary grade silicone sealant at the back and sides of every worktop as water infiltrations will damage your unit and this is not covered under our product guarantee.
- All surfaces of all units should not be exposed to standing water or persistent humidity. They must be wiped and dried off immediately after use. If your unit is not cared for correctly it will deteriorate and this will not be covered under our product guarantee.
- All our units are guaranteed for 10 years* from date of invoice (1 year for mirrors, electrical items, cisterns, WC frames, sanitary ware, taps and accessories) against all manufacturing defects acknowledged by our company, limited to domestic users.
- The guarantee does not apply to any products that have been misused or abused in any way.

The products must be installed and cared for in line with our fitting instructions, local water byelaws, IEE electrical directives and any other applicable regulations.

- In the unlikely event that the product fails within 10 years* (1 year for mirrors, electrical items, cisterns, WC frames, sanitary ware, taps and accessories), we offer a free of charge replacement part (or nearest equivalent). Liability is limited to individual products and does not cover consequential loss/damage or any further unfitting/refitting costs or financial compensation.

The customer will be required to pay for the installation cost of the replacement part.

* Upon completion and registration of the enclosed Guarantee card, refer to general terms of sale

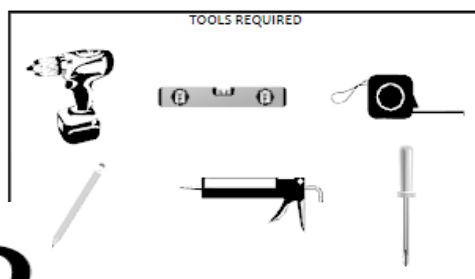
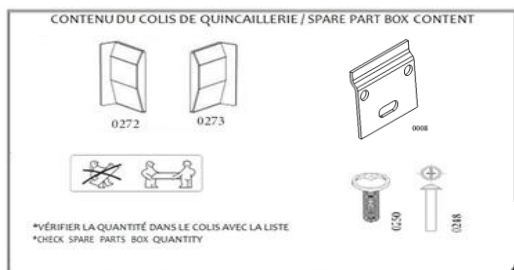
MAINTENANCE:

- Wipe and rinse the surface of the furniture after contact with any chemical product.
 - Do not use abrasive cream (cif, etc...), wire wool, scouring pad, solvent, acid, etc...
 - Dry the surface off with a soft cloth after cleaning
 - For mirrors, use a chamois leather, and dry the edges with a suitable soft cloth.
 - Use a dry cloth to clean any electric components, they must be switched off
- OUR FURNITURE WILL DETERIORATE THROUGH EXCESSIVE WATER SPILLAGE OR HEAVY CONDENSATION. IT IS ADVISED THAT EVERY BATHROOM SHOULD BE WELL VENTILATED AND FITTED WITH A SUITABLE EXTRACTOR FAN TO AVOID ANY PERSISTENT HUMIDITY AND ALL FURNITURE SHOULD BE PROTECTED WITH BATH/SHOWER SCREEN ENCLOSURES TO PRESERVE THEIR QUALITY.

ELECTRICAL INSTALLATION:

All Ambiance Bain units fitted with electrical components (mirrors, mirrored cabinets, sockets, etc...) must only be installed in ZONE 3. Installation and fitting of all electrical items must be completed by a qualified electrician. Any final decisions regarding the installation should also be made by the electrician. All electrical items must be tested prior to installation, as liability is limited to replacement items only.

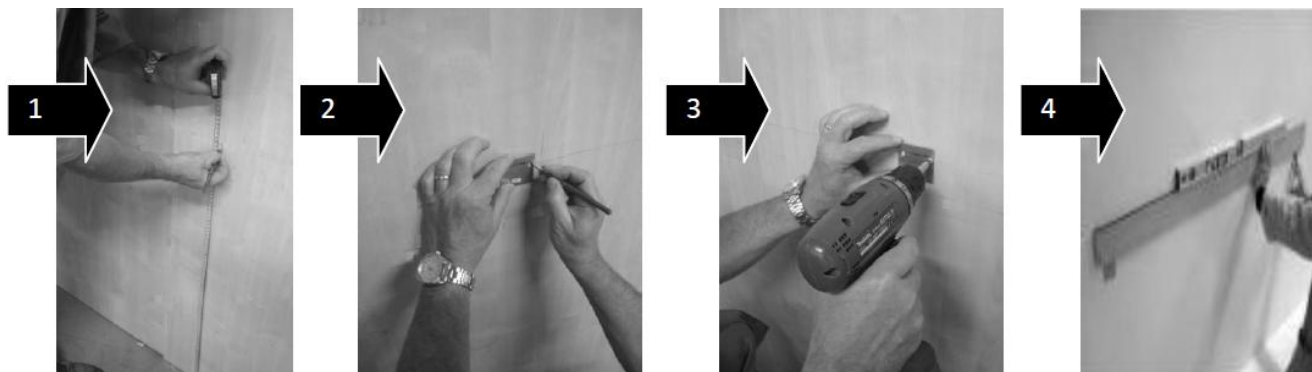
All information is downloadable from the website www.ambiancebain.co.uk



Ab
ambiance bain

INSTALLATION OF BASIN UNIT

1. FIX THE WALL PLATES «0008» (screws and wall plugs not included)

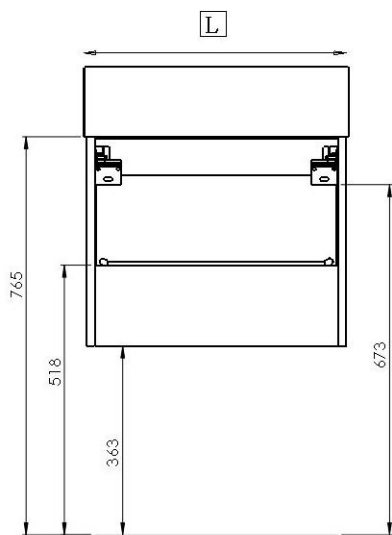


1. Determine the finished height (drawing below)

2. Position the wall plate, mark and drill

3. Fix the first wall plate

4. Place the second wall plate aligning it with the first one

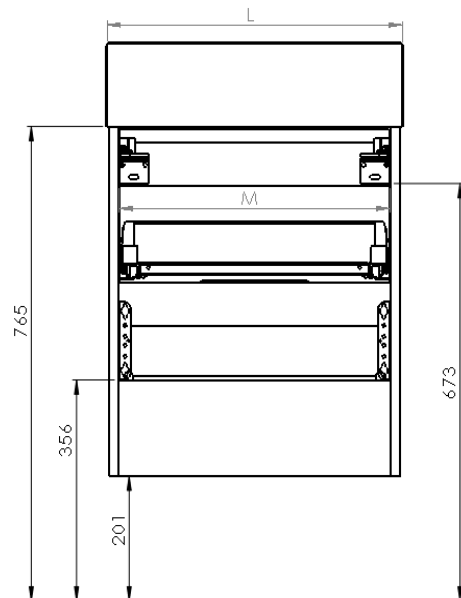


(Width of the unit) : L 510mm = M 465 mm
: L 610mm = M 540mm



CAUTION:

Ensure that you use the correct fixing according to the type of wall construction.



All dimensions are in mm.
The dimensions are given to the bottom of the wall plate.

2. REMOVE THE DRAWERS, SEE SEPARATE INSTRUCTIONS ATTACHED

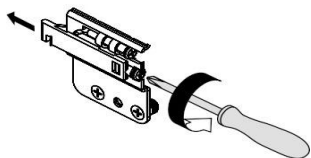


CAUTION :

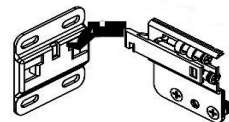
Use wedges to put the unit on the floor

INSTALLATION OF BASIN UNIT

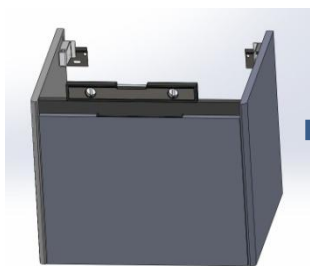
3. LOOSEN THE WALL HANGING BRACKETS ON THE UNIT



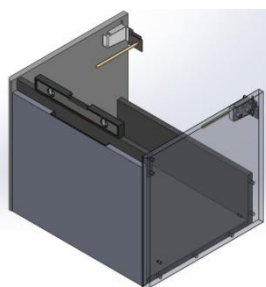
4. HANG THE UNIT ON THE WALL PLATE



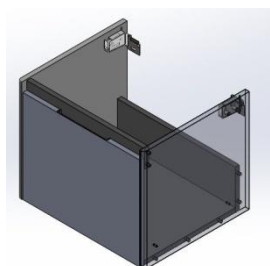
5. MARK THE SPOT OF DRILLING



1. Adjust the level of the unit



2. Mark the holes of the additional support brackets



3. Remove the unit



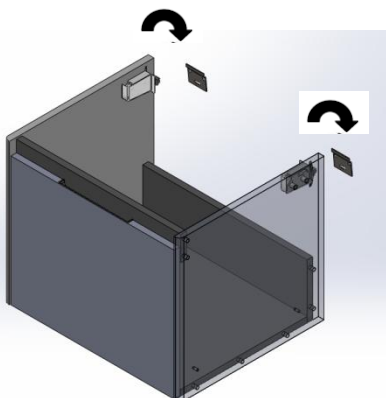
4. Drill the holes (screws and wall plug not provided)



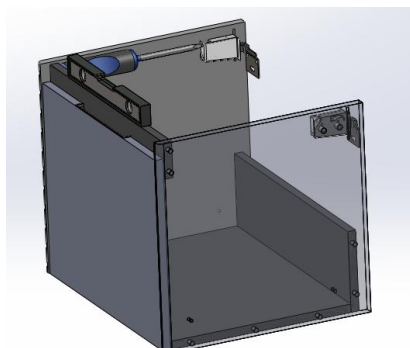
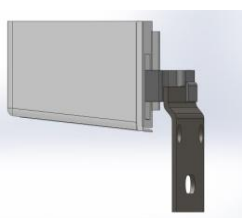
CAUTION:

Ensure that you use the correct fixing according to the type of wall construction.

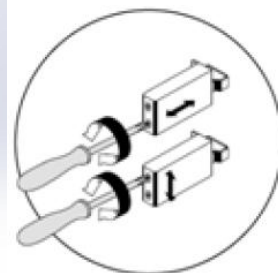
6. FIX THE UNIT ON THE WALL



1. Hang the unit on the wall plates

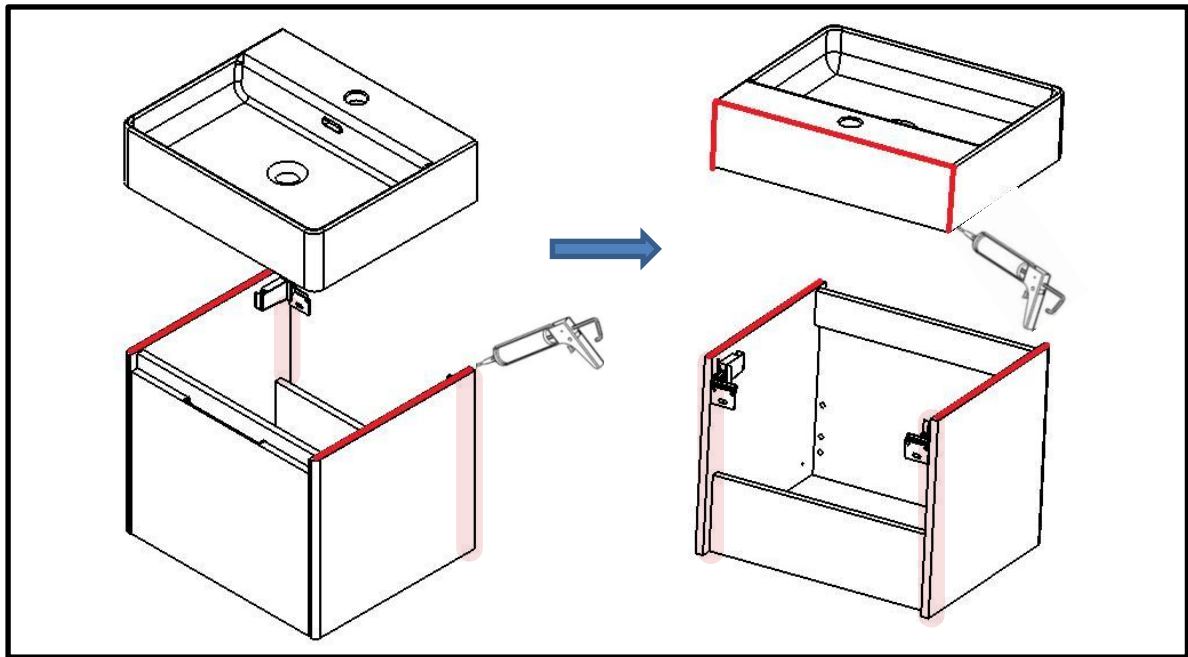


2. Tighten the brackets on the unit so that the furniture fits to the wall and adjust the levels

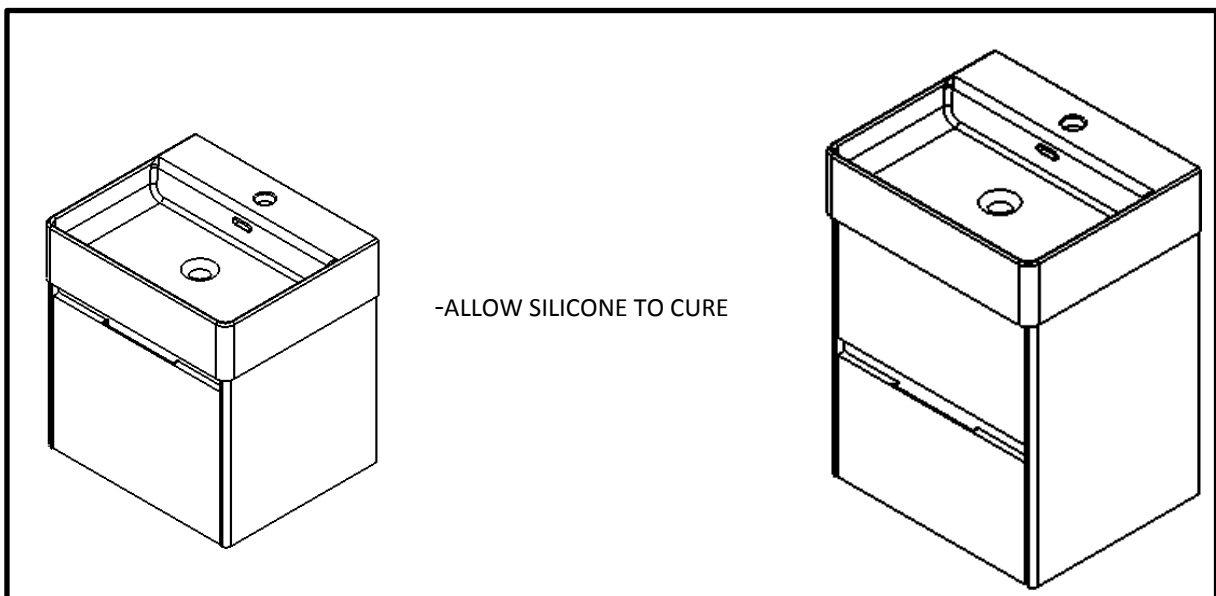


INSTALLATION OF BASIN UNIT

7. *APPLY SILICONE ON THE BOTTOM OF SINK and sides*



8. **INSTALL THE SINK ON THE UNIT**



INSTALLATION OF BASIN UNIT

9. CONNECTING THE PLUMBING, CHECK FOR LEAKS

1. Insert the drain
(slotted waste) in the
hole
Not supplied with unit

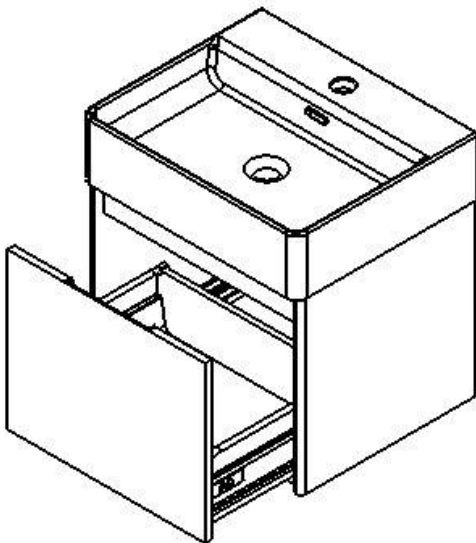
2. Screw the trap to
the waste

- The connection and elements used are
given as an exemple.



CAUTION:
*Tighten only by hand
Do not forget the seals*

10. - SET AND ADJUST THE DRAWER, SEE SEPARATE INSTRUCTION ATTACHED



*Make sure the unit is level so that the
adjustment is not too difficult*

