

SAXO



FITTING INSTRUCTIONS

RECOMMENDATIONS.....	PAGE 1
BASIN UNIT INSTALLATION.....	PAGE 2 A 4
TALL UNIT INSTALLATION.....	PAGE 5 A 6
MIRROR INSTALLATION	PAGE 7 A 8

Important:

- Unpack the units carefully ensuring not to scratch them with the knife blade. Inspect every item carefully before installation as no claim for faults or damages will be accepted once the item is installed.
 - We recommend that you use protection (for example a blanket) to cover the working area. Mirrors and worktops are very fragile, we recommend that you put them on battens (and never directly onto the floor).
 - Our furniture is designed to be fitted on a level, flat finished wall.
 - It is imperative that you use a sanitary grade silicone sealant at the back and sides of every worktop as water infiltrations will damage your unit and this is not covered under our product guarantee.
 - All surfaces of all units should not be exposed to standing water or persistent humidity. They must be wiped and dried off immediately after use. If your unit is not cared for correctly it will deteriorate and this will not be covered under our product guarantee.
 - All our units are guaranteed for 10 years* from date of invoice (1 year for mirrors, electrical items, cisterns, WC frames, sanitary ware, taps and accessories) against all manufacturing defects acknowledged by our company, limited to domestic users.
 - The guarantee does not apply to any products that have been misused or abused in any way. The products must be installed and cared for in line with our fitting instructions, local water byelaws, IEE electrical directives and any other applicable regulations.
 - In the unlikely event that the product fails within 10 years* (1 year for mirrors, electrical items, cisterns, WC frames, sanitary ware, taps and accessories), we offer a free of charge replacement part (or nearest equivalent). Liability is limited to individual products and does not cover consequential loss/damage or any further unfitting/refitting costs or financial compensation. The customer will be required to pay for the installation cost of the replacement part.
- * Upon completion and registration of the enclosed Guarantee card, refer to general terms of sale

MAINTENANCE:

- Wipe and rinse the surface of the furniture after contact with any chemical product.
 - Do not use abrasive cream (cif, etc...), wire wool, scouring pad, solvent, acid, etc...
 - Dry the surface off with a soft cloth after cleaning
 - For mirrors, use a chamois leather, and dry the edges with a suitable soft cloth.
 - Use a dry cloth to clean any electric components, they must be switched off
- OUR FURNITURE WILL DETERIORATE THROUGH EXCESSIVE WATER SPILLAGE OR HEAVY CONDENSATION. IT IS ADVISED THAT EVERY BATHROOM SHOULD BE WELL VENTILATED AND FITTED WITH A SUITABLE EXTRACTOR FAN TO AVOID ANY PERSISTENT HUMIDITY AND ALL FURNITURE SHOULD BE PROTECTED WITH BATH/SHOWER SCREEN ENCLOSURES TO PRESERVE THEIR QUALITY.

ELECTRICAL INSTALLATION:

All Ambiance Bain units fitted with electrical components (mirrors, mirrored cabinets, sockets, etc...) must only be installed in ZONE 3. Installation and fitting of all electrical items must be completed by a qualified electrician. Any final decisions regarding the installation should also be made by the electrician. All electrical items must be tested prior to installation, as liability is limited to replacement items only.

All information is downloadable from the website www.ambiancebain.co.uk

CONTENU DU COLIS DE QUINCAILLERIE / SPARE PART BOX CONTENT



*VÉRIFIER LA QUANTITÉ DANS LE COLIS AVEC LA LISTE
*CHECK SPARE PARTS BOX QUANTITY

TOOLS REQUIRED

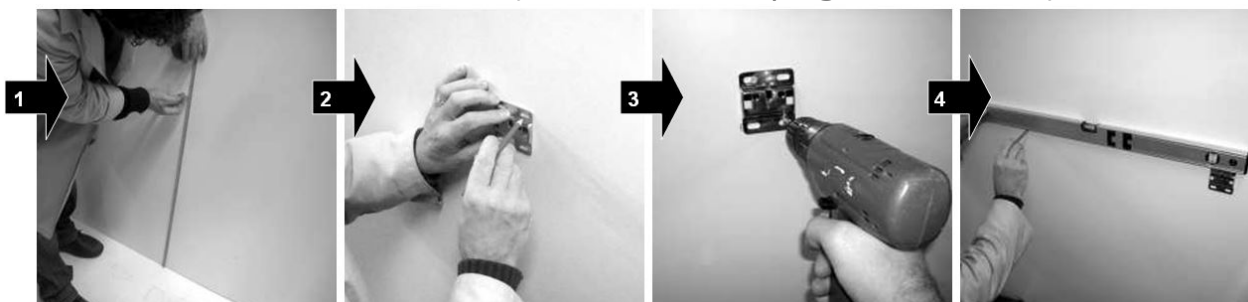


INSTALLATION MEUBLE BAS SOUS VASQUE

BASIN UNIT INSTALLATION

1.

FIX THE WALL PLATES «0271» (screws and wall plugs not included)



1

Determine the finished height

2

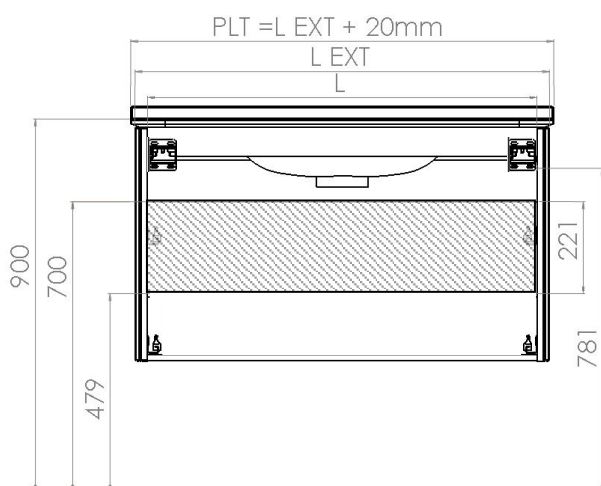
Position the wall plate, mark and drill

3

Fix the first wall plate

4

Place the second wall plate aligning it with the first one



CODE MEUBLE	L ext	L
BT564740GSAXO1	399	353
BT564740DSAXO1	399	353
BVT5647060SAXO1	599	539
BVT5647060GSAXO1	599	553
BVT5647060DSAXO1	599	553
BVT5647070GSAXO1	699	653
BVT5647070DSAXO1	699	653
BVT5647080SAXO1	799	739
BVT5647080GSAXO1	799	753
BVT5647080DSAXO1	799	753
BVT5647100SAXO1	999	939
BVT5647100GSAXO1	999	953
BVT5647100DSAXO1	999	953
BVT56471002GSAXO1	999	939
BVT56471002DSAXO1	999	939

*All dimensions are in mm.
The dimensions are given to the
bottom of the wall plate.*



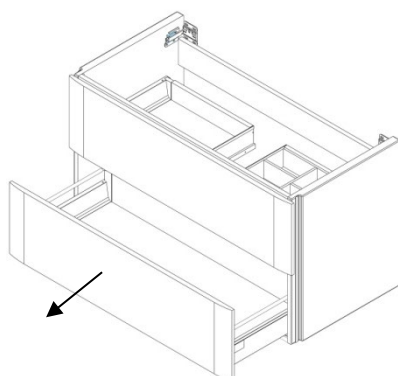
Incoming supply



CAUTION:
*Ensure that you use the correct fixing according to the type
of wall construction.*

2.

REMOVE THE DRAWERS, SEE SEPARATE INSTRUCTIONS ATTACHED



CAUTION :

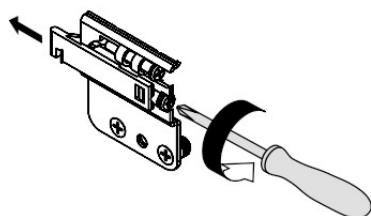
*Use wedges to put the
unit on the floor*

INSTALLATION MEUBLE BAS SOUS VASQUE

BASIN UNIT INSTALLATION

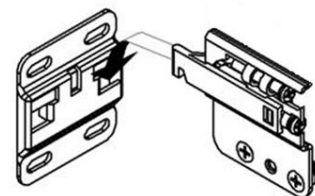
3.

LOOSEN THE WALL HANGING BRACKETS ON THE UNIT



4.

HANG THE UNITS ONTO THE WALL PLATES



5.

MARK THE FIXING BRACKETS



1 Adjust the level of the unit



2 Fixing the brackets on the unit



3 Mark the holes of the additional support brackets



4 Remove the unit



5 Drill the holes (screws and wall plug not provided)



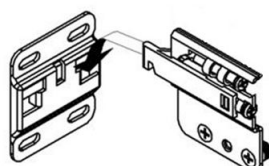
CAUTION:

Ensure that you use the correct fixing according to the type of wall construction.

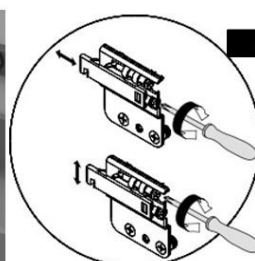
6. FIX THE UNIT ONTO THE WALL



1 Hang the unit onto the wall plates



2 Tighten the brackets on the unit so that the furniture fits to the wall and adjust the levels



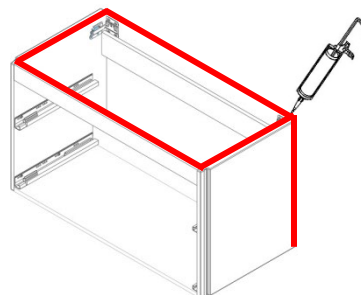
3 Fix the additional support to the wall (screw and wall plug not provided)

BASIN UNIT INSTALLATION

7. FASTEN FURNITURE TOGETHER WITH THE ASSEMBLY BOLTS «0248 AND 0250»

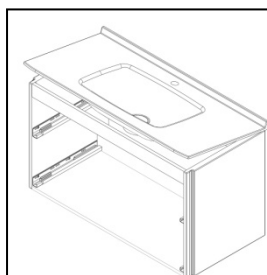


DOUBLE UNITS
ONLY

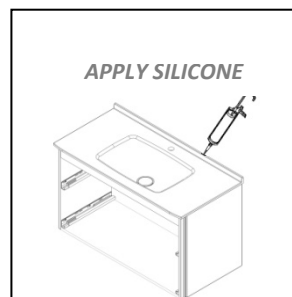


8. APPLY SILICONE ON TOP AND SIDE OF UNIT

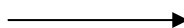
9. INSTALL THE SMO TOP ON THE UNIT



ADVICE:
Fit the basin back towards
the wall then lower onto
unit.

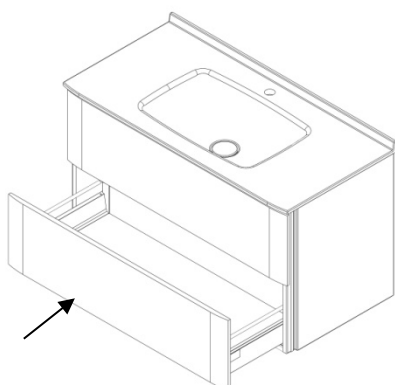


10. ASSEMBLE THE BASIN WASTE



- 11.

FIT AND ADJUST THE DRAWERS, SEE SEPARATE INSTRUCTIONS ATTACHED



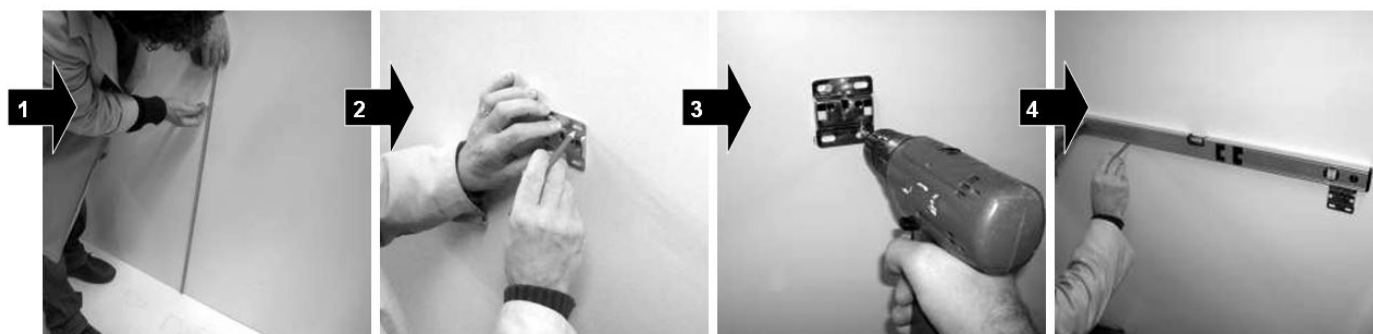
Make sure the unit is level
So that the adjusting is not too difficult

CAUTION :
Use wedges to put the
unit on the floor

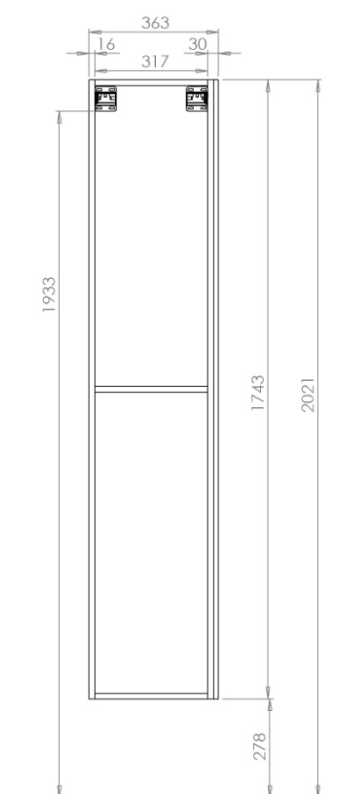
TALL UNIT INSTALLATION

1.

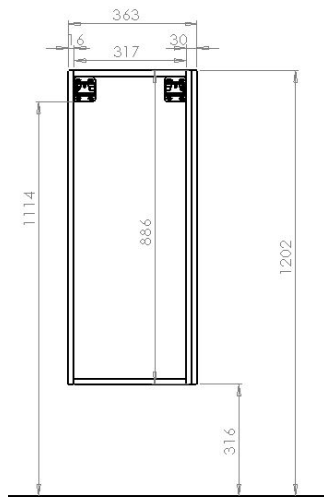
FIX THE WALL PLATES «0271» (screws and wall plugs not included)



- 1** Determine the finished height
- 2** Position the wall plate, mark and drill
- 3** Fix the first wall plate
- 4** Place the second wall plate aligning it with the first one



All dimensions are in mm.
The dimensions are given to the bottom of the wall plate.



CAUTION:
Ensure that you use the correct fixing according to the type of wall construction.



See the thickness of the side panel
The technical drawing are left version.

2.

REMOVE THE DOOR SEE SEPARATE INSTRUCTIONS ATTACHED

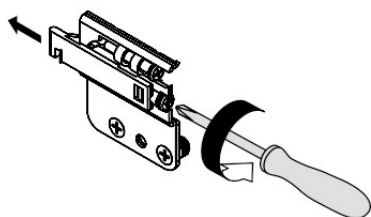


CAUTION :
Use wedges to put the unit on the floor

TALL UNIT INSTALLATION

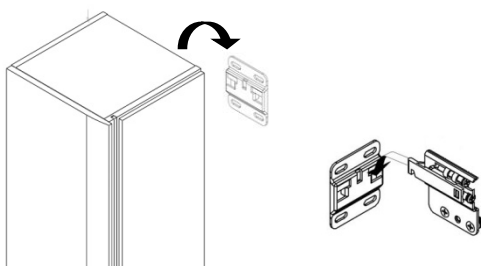
3.

LOOSEN THE WALL HANGING BRACKETS ON THE UNIT



5.

HANG THE UNITS ONTO THE WALL PLATES



6.

FIT THE WALL HANGING BRACKET COVERS « 0272 AND 0273 »

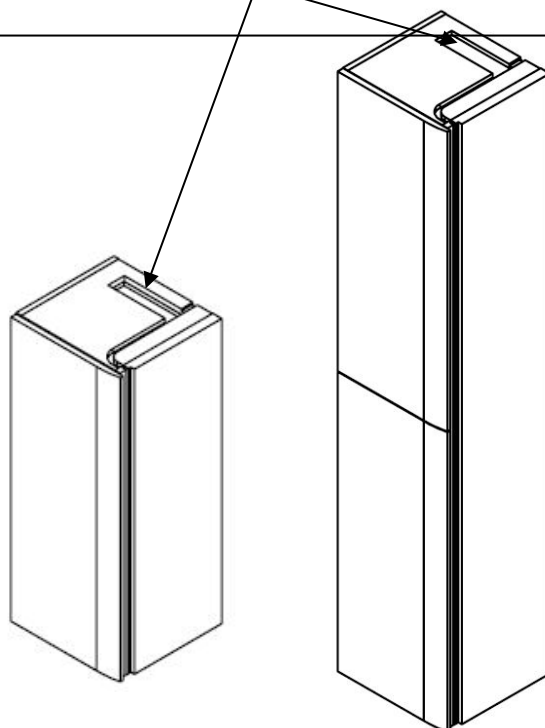
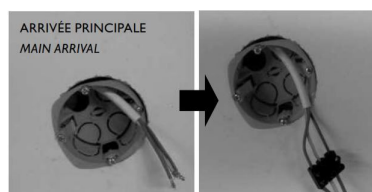


Make sure the unit is level
So that the adjusting is not too difficult

4.

Connect Electrics

Connect the light to the bathroom lighting circuit via an outlet plate (according to current regulations, the connection must be made by a qualified electrician)



FIT AND ADJUST THE DOOR, SEE SEPARATE INSTRUCTIONS ATTACHED



MIRROR INSTALLATION

1.

FIX THE SCREWS (not provided)



*DETERMINE THE
FINISHED HEIGHT*



FIX THE FIRST SCREW



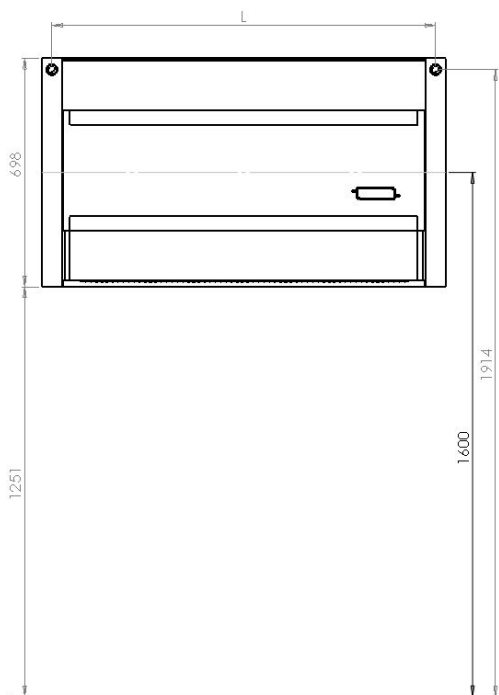
*THE SCREW MUST PROTRUDE
MAXIMUM 8 MM FROM THE
WALL*



*FIX THE SECOND SCREW ALIGNING IT
WITH THE FIRST ONE*



CAUTION :
*Ensure that you use the correct
fixing according to the type of
wall construction*



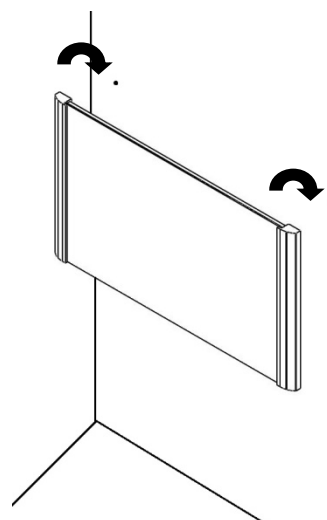
All dimensions are in mm.
Recommended height 1600 mm at the mirror center.

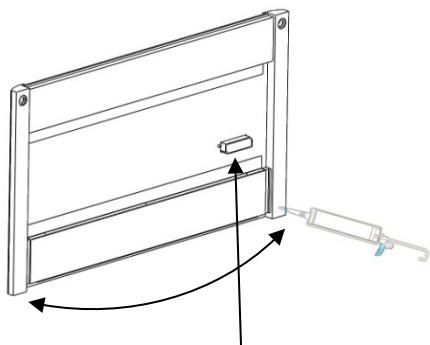
CODE MEUBLE	L
SAXOMI60	500
SAXOMI80	700
SAXOMI100	900
SAXOMI120	1100

MIRROR INSTALLATION

2.

HANG THE MIRROR ON THE SCREWS

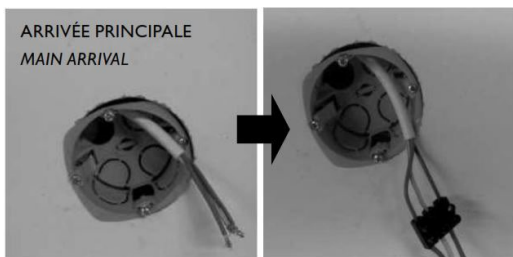




It is recommended to put a silicone point in each bottom corner of the mirror

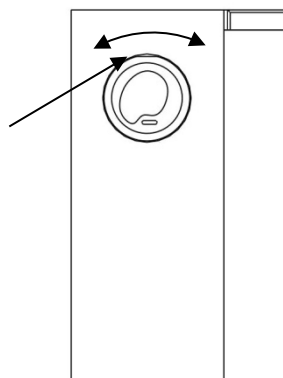
Connect the light to the bathroom lighting circuit via an outlet plate (according to current regulations, the connection must be made by a qualified electrician)

ARRIVÉE PRINCIPALE
MAIN ARRIVAL



LEVEL ADJUSTMENT

Insert screwdriver in the rectangular cut then turn right or left to adjust the level



Ab
ambiance bain

www.ambiancebain.com | www.ambiancebain.co.uk

AMBIANCE BAIN - BP206 - 07502 Guilherand-Granges Cedex - FRANCE | AMBIANCE BAIN UK - 15 Cranford Court, Hardwick Grange, Woolston, Warrington, Cheshire, WAI4RX