

KOMPLEMENTS

FITTING INSTRUCTIONS

IMPORTANT.....	PAGE 2
TECHNICAL DETAILS SINGLE UNITS.....	PAGE 3
TECHNICAL DETAILS DOUBLE UNITS.....	PAGE 4
INSTALLATION OF BASIN UNIT.....	PAGE 5 TO 6



Important :

- Unpack the units carefully ensuring not to scratch them with the knife blade. Inspect every item carefully before installation as no claim for faults or damages will be accepted once the item is installed.
 - We recommend that you use protection (for example a blanket) to cover the working area. Mirrors and worktops are very fragile, we recommend that you put them on battens (and never directly onto the floor).
 - Fix the furniture on a wall already tiled.
 - Our furniture is designed to be on a level finished wall.
 - It is imperative that you use a sanitary grade silicone sealant around the basin as water infiltrations will damage your unit and this is not covered under our product guarantee.
 - All surfaces of all units should not be exposed to standing water or persistent humidity. They must be wiped and dried immediately after use. If your unit is not cared for correctly it will deteriorate and this will not be covered under our product guarantee.
 - All our units are guaranteed for 10 years* from date of invoice (1 year for mirrors, electrical items, cisterns, WC frames, sanitary ware, taps and accessories) against all manufacturing defects acknowledged by our company, limited to domestic users.
 - The guarantee does not apply to any products that have been misused or abused in any way. The products must be installed and cared for in line with our fitting instructions, local water byelaws, IEE electrical directives and any other applicable regulations.
 - In the unlikely event that the product fails within 10 years* (1 year for mirrors, electrical items, cisterns, WC frames, sanitary ware, taps and accessories), we offer a free of charge replacement part (or nearest equivalent). Liability is limited to individual products and does not cover consequential loss/damage or any further refitting costs or financial compensation. The customer will be required to pay for the installation cost of the replacement part.
- * Upon completion and registration of the enclosed Guarantee card, refer to general terms of sale

BASIN FIXING:

- The komplements units are designed to hang underneath various ceramic basins.
- These basins must be secured to the wall using fixings as per manufacturers instructions.
- Under no circumstances must the unit carry the weight of the basin.
- Once installed, a suitable silicone seal should be applied between the basin and the top of unit and along back and sides of basin to prevent water infiltration

MAINTENANCE:

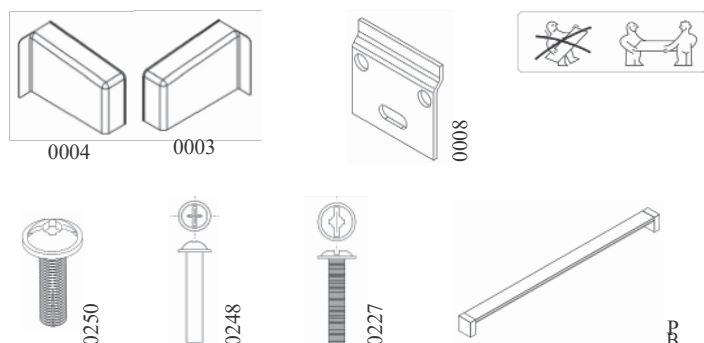
- Wipe and rinse the surface of the furniture after contact with any chemical product.
- Do not use abrasive cream (cif, etc...), wire wool, scouring pad, solvent, acid, etc...
- Dry the surface of with a soft cloth after cleaning
- For mirrors, use a chamois leather, and dry the edges with a suitable soft cloth.
- Use a dry cloth to clean any electric components, they must be switched off.

OUR FURNITURE WILL DETERIORATE THROUGH EXCESSIVE WATER SPILLAGE OR HEAVY CONDENSATION. IT IS ADVISED THAT EVERY BATHROOM SHOULD BE WELL VENTILATED AND FITTED WITH A SUITABLE EXTRACTOR FAN TO AVOID ANY PERSISTENT HUMIDITY AND ALL FURNITURE SHOULD BE PROTECTED WITH BATH/SHOWER SCREEN ENCLOSURES TO PRESERVE THEIR QUALITY.

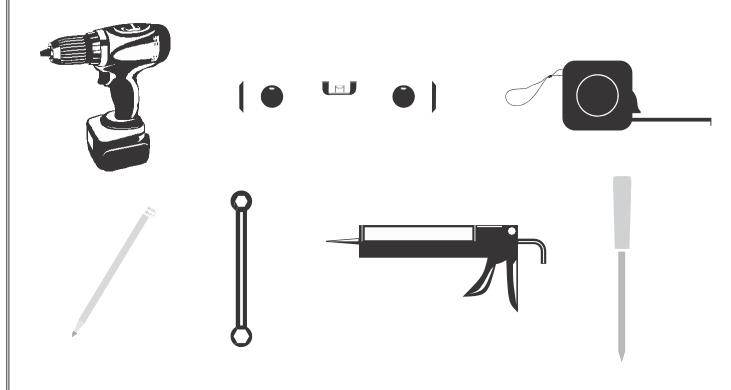
ELECTRICAL INSTALLATION:

All Ambiance Bain units fitted with electrical components (mirrors, mirrored cabinets, sockets, etc...) must only be installed in ZONE 3. Installation and fitting of all electrical items must be completed by a qualified electrician. Any final decisions regarding the installation should also be made by the electrician. All electrical items must be tested prior to installation, as liability is limited to replacement items only.

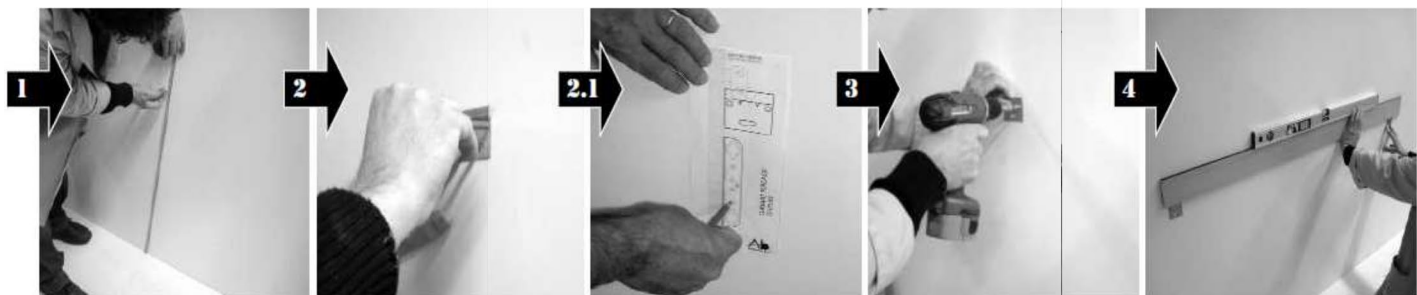
All information is downloadable from the website www.ambiancebain.co.uk

SPARE PART BOX CONTENT

*CHECK SPARE PARTS BOX QUANTITY

TOOLS REQUIRED

1. FIX THE WALL PLATES "0008" (screw and wall plugs not included)



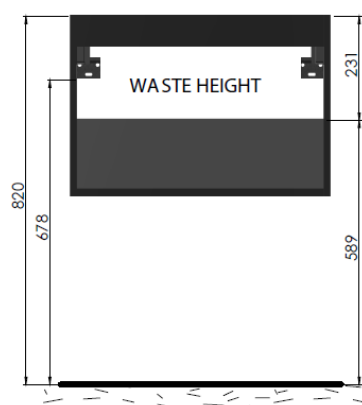
1 Determine the finished height

2 Position the plate, mark and drill

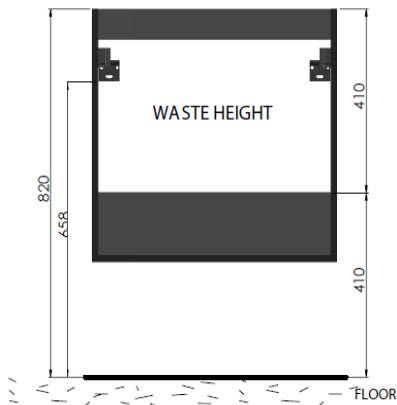
2.1 For unit with brackets position the template mark and drill all the holes

3 Fix the first wall plate

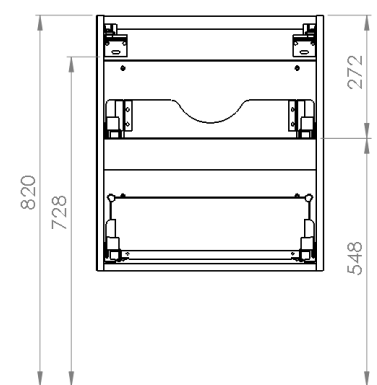
4 Place the second wall plate aligning it with the first one



KOMAMB60 / KOMAMB80
KOMGAL60 / KOMGAL65



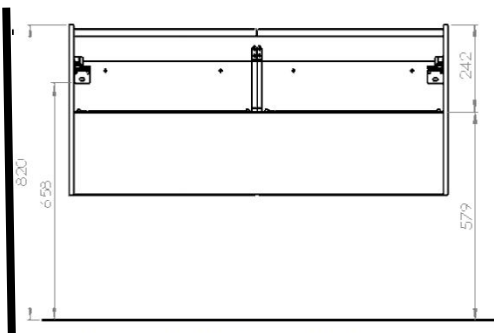
KOMDUR802DR / KOMDUR1002DR
KOMDUR652DR / KOMSUB21002DR
KOMSUB2652DR / KOMJOY652DR
KOMJOY802DR / KOMJOY1002DR



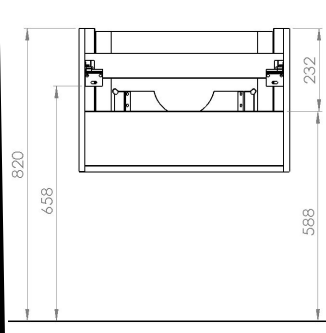
KOMDARL532DR



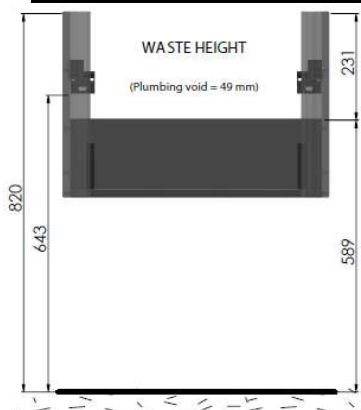
KOMSUB130 / KOMSUB21302DR



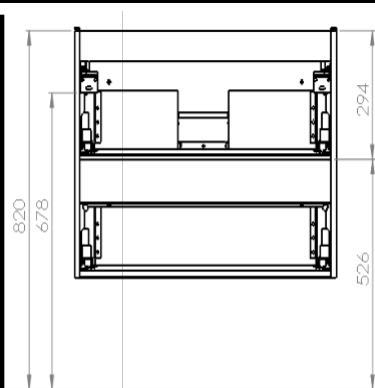
KOMJOY1302DR / KOMPROS1302DR



KOMHAP2R651DR
KOMHAP2R801DR
KOMHAP2R1001DR

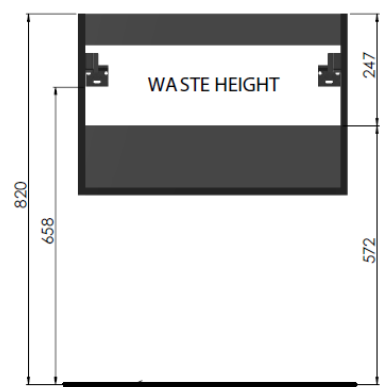


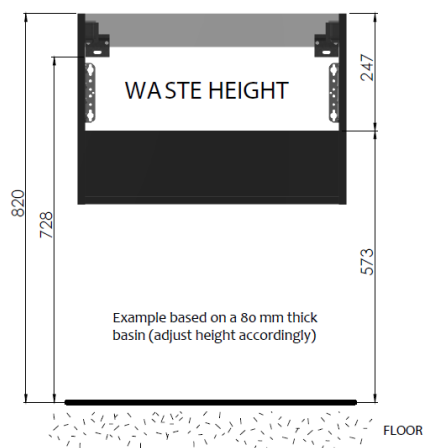
KOMSUB2R551DR KOMSUB2R601DR /
KOMSUB2R651DR



KOMAMB802DR

KOMDARL531DR
KOMDUR651DR / KOMDUR801DR
KOMDUR1001DR KOMS50601DR
KOMJOY601DR KOMJOY651DR
KOMJOY801DR / KOMJOY1001DR
KOMPROS551DR / KOMPROS601DR
KOMPROS651DR / KOMPROS701DR
KOMPROS851DR KOMPROS1051DR
KOMS50801DR / KOMS501001DR
KOMS501201DR
KOMSUB2451DR / KOMSUB2501DR
KOMSUB2551DR / KOMSUB2601DR
KOMSUB2651DR / KOMSUB2801DR
KOMSUB21001DR / KOMSUB55
KOMSUB60
KOMVER70



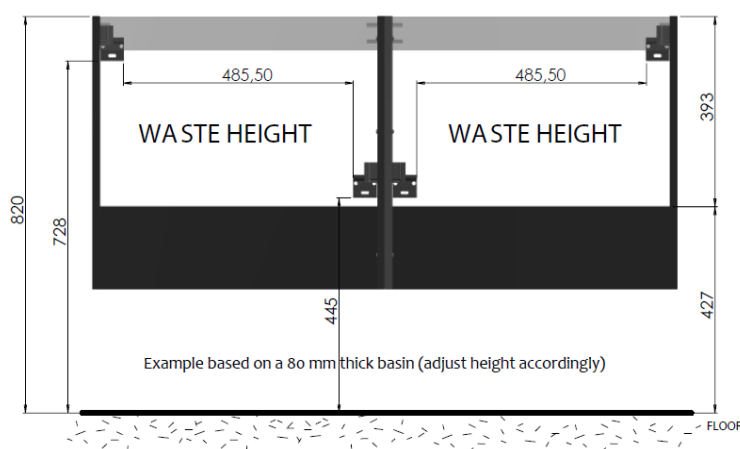


All dimensions are in mm.
The dimensions are given to the bottom of the wall plate.



CAUTION:
Ensure that you use the correct fixing
according to the type of wall construction.

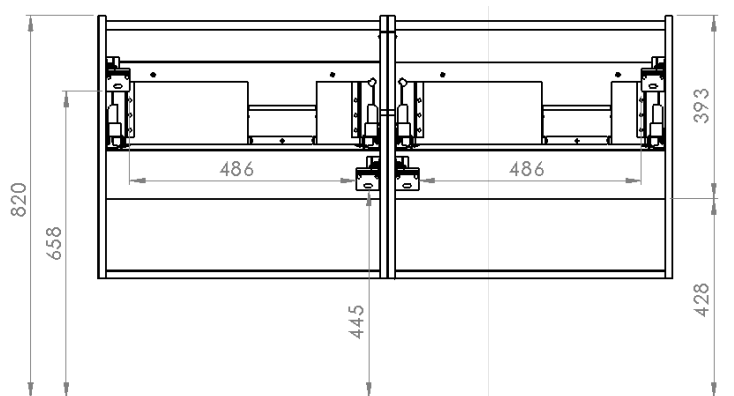
DOUBLE UNITS:



All dimensions are in mm.
The dimensions are given to the bottom of the wall plate.

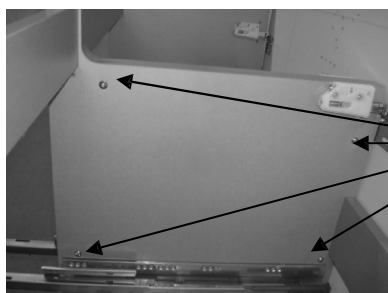


CAUTION:
Ensure that you use the correct fixing
according to the type of wall construction.

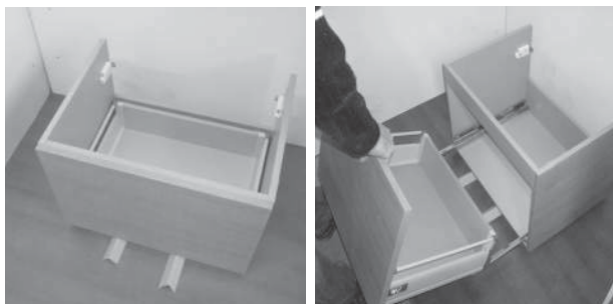


KOMJOY1304DR

FOR DOUBLE UNITS CONNECT FURNITURE TOGETHER WITH THE ASSEMBLY BOLTS "0248 AND 0250" AFTER THE STEP 5 PAGE 4



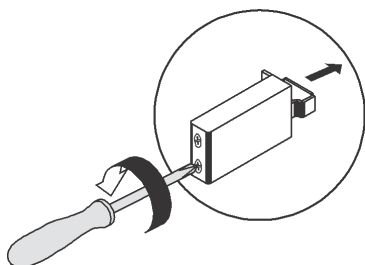
2 REMOVE THE DRAWERS, SEE SEPARATE INSTRUCTIONS ATTACHED



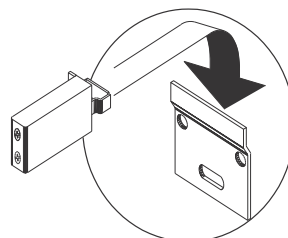
ADVICE:
Use wedges to put the unit on the floor



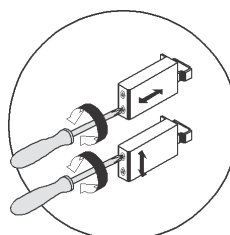
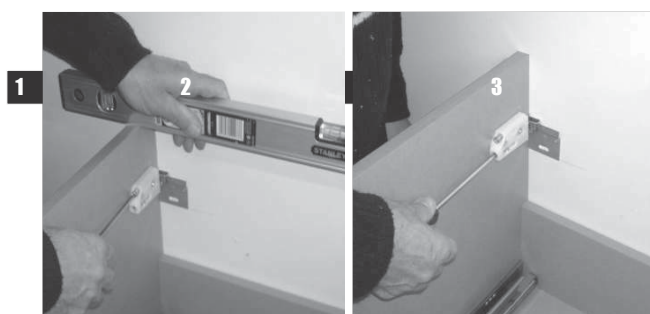
3 LOOSEN THE WALL HANGING BRACKETS ON THE UNIT



4 HANG THE UNIT ON THE WALL PLATES



5 ADJUST THE LEVELS AND TIGHTEN THE BRACKETS ON THE UNIT THEN FIX ADDITIONAL BRACKET



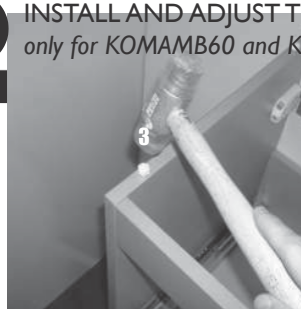
6 INSTALL THE CERAMIC BASIN

The basin must be secured to the wall, using fixing and instructions supplied by basin manufacturer.
Under no circumstances must the unit carry the weight of the basin.



CAUTION:
Ensure that you use the correct fixing according to the type of wall construction.

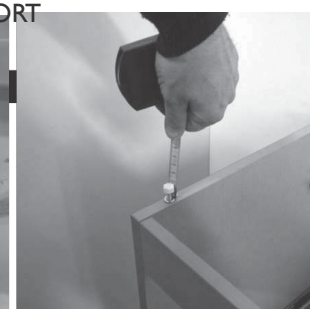
6.1 INSTALL AND ADJUST THE CERAMIC BASIN SUPPORT *only for KOMAMB60 and KOMAMB80*



1 Put the ceramic supports into the top edge of the unit



2 Measure the depth of the overhang of the ceramic basin

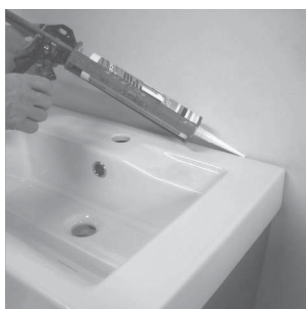


3 Adjust the supports to this height

- 9 CONNECT THE PLUMBING, CHECK FOR LEAKS
- 10 FIT THE WALL HANGING BRACKET COVERS «0003 and 0004»



- 11 APPLY SILICONE SEALS



Once installed, a suitable silicone seal should be applied between the basin and the top of unit and along back and sides of basin and unit to prevent water infiltration.



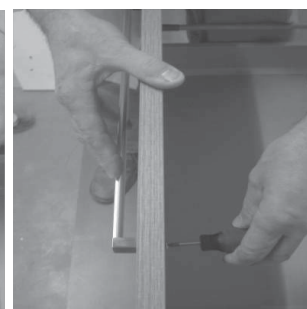
FAILURE TO APPLY THIS NECESSARY SEAL WILL IN VALIDATE ANY PRODUCT WARRANTY

- 12 REFIT AND ADJUST THE DRAWERS, SEE SEPERATE INSTRUCTION ATTACHED



Make sure the unit is level so that adjusting is not too difficult

- 13 FIT THE HANDLES



Fix the handle «BP» with the screws «0227» The fascia is pre-drilled