

DOLCE

FITTING INSTRUCTIONS



IMPORTANT
BASIN UNIT
MIRROR
TALL UNIT

PAGE 1
PAGE 2 TO 4
PAGE 5 TO 6
PAGE 7 TO 8

Important :

- Unpack the units carefully ensuring not to scratch them with the knife blade. Inspect every item carefully before installation as no claim for faults or damages will be accepted once the item is installed.
- We recommend that you use protection (for example a blanket) to cover the working area. Mirrors and worktops are very fragile, we recommend that you put them on battens (and never directly onto the floor).
- Our furniture is designed to be fitted on a level, flat finished wall.
- It is imperative that you use a sanitary grade silicone sealant at the back and sides of every worktop as water infiltrations will damage your unit and this is not covered under our product guarantee.
- All surfaces of all units should not be exposed to standing water or persistent humidity. They must be wiped and dried off immediately after use. If your unit is not cared for correctly it will deteriorate and this will not be covered under our product guarantee.
- All our units are guaranteed for 10 years* from date of invoice (1 year for mirrors, electrical items, cisterns, WC frames, sanitary ware, taps and accessories) against all manufacturing defects acknowledged by our company, limited to domestic users.
- The guarantee does not apply to any products that have been misused or abused in any way. The products must be installed and cared for in line with our fitting instructions, local water byelaws, IEE electrical directives and any other applicable regulations.
- In the unlikely event that the product fails within 10 years* (1 year for mirrors, electrical items, cisterns, WC frames, sanitary ware, taps and accessories), we offer a free of charge replacement part (or nearest equivalent). Liability is limited to individual products and does not cover consequential loss/damage or any further unfitting/refitting costs or financial compensation. The customer will be required to pay for the installation cost of the replacement part.

* Upon completion and registration of the enclosed Guarantee card, refer to general terms of sale

MAINTENANCE:

- Wipe and rinse the surface of the furniture after contact with any chemical product.
- Do not use abrasive cream (cif, etc...), wire wool, scouring pad, solvent, acid, etc...
- Dry the surface off with a soft cloth after cleaning
- For mirrors, use a chamois leather, and dry the edges with a suitable soft cloth.
- Use a dry cloth to clean any electric components, they must be switched off

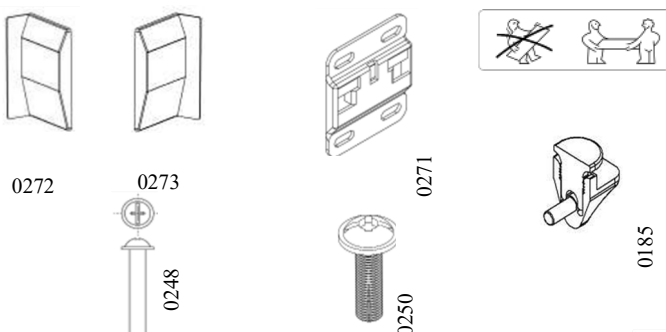
OUR FURNITURE WILL DETERIORATE THROUGH EXCESSIVE WATER SPILLAGE OR HEAVY CONDENSATION. IT IS ADVISED THAT EVERY BATHROOM SHOULD BE WELL VENTILATED AND FITTED WITH A SUITABLE TIME DELAY OR HUMIDISTAT EXTRACTOR FAN TO AVOID ANY HUMIDITY AND ALL FURNITURE SHOULD BE PROTECTED WITH BATH/SHOWER SCREEN ENCLOSURES TO PRESERVE THEIR QUALITY.

ELECTRICAL INSTALLATION:

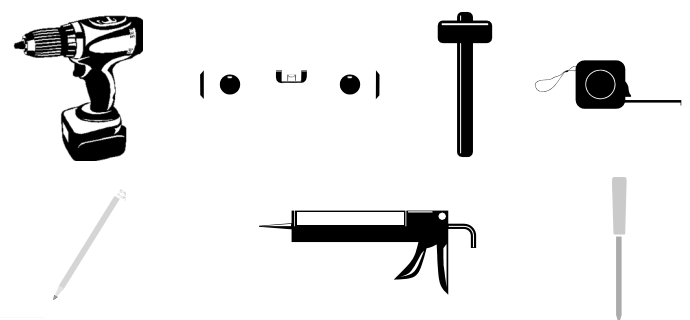
All Ambiance Bain units fitted with electrical components (mirrors, mirrored cabinets, sockets, etc...) must only be installed in ZONE 3. Installation and fitting of all electrical items must be completed by a qualified electrician. Any final decisions regarding the installation should also be made by the electrician. All electrical items must be tested prior to installation, as liability is limited to replacement items only.

All information is downloadable from the website www.ambiancebain.co.uk

SPARE PART BOX CONTENT

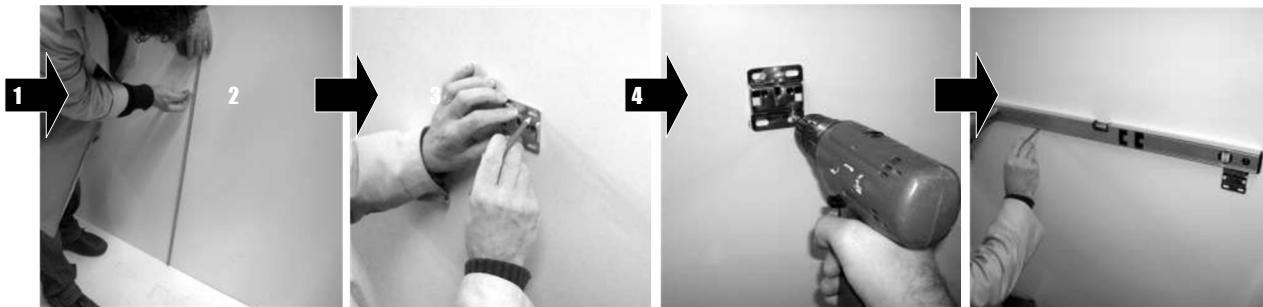


TOOLS REQUIRED



INSTALLATION OF BASIN UNIT

1) FIX THE WALL PLATES «0271» (screws and wall plugs not included)

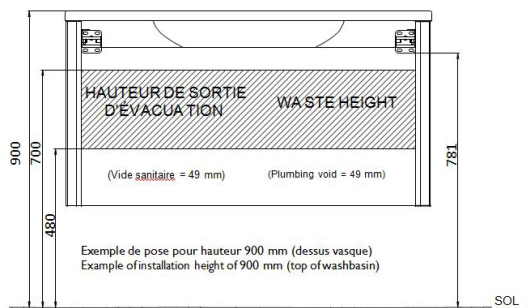


1 Determine the finished height

2 Position the wall plate (see figure), mark and drill

3 Fix the first wall plate

4 Position the second wall plate aligning it with the first one



Supply incom area

(Width of the unit without curved side panel) - 34 mm



The dimensions are given to the bottom of the wall plate.

If you want to use the CLS27 also you go down the fixing to 40mm.



CAUTION:

Ensure that you use the correct fixing according to the type of wall construction.
Fix all of the wall plates

2 REMOVE THE DRAWERS, SEE SEPARATE INSTRUCTIONS ATTACHED



ADVICE:

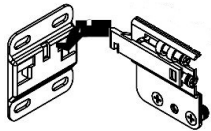
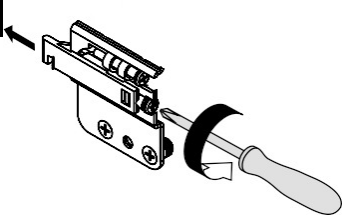
Use wedges to put the unit on the floor.



3 LOOSEN THE WALL HANGING BRACKETS ON THE UNIT

4 HANG THE UNITS ONTO THE WALL PLATES

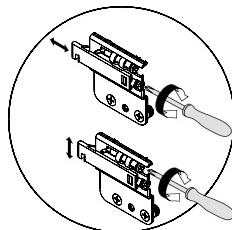
INSTALLATION OF BASIN UNIT



INSTALLATION OF BASIN UNIT

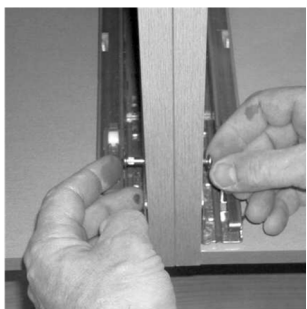
5

ADJUST THE LEVELS AND TIGHTEN THE BRACKETS ON THE UNIT SO THAT THE FURNITURE FITS TO THE WALL



6

FASTEN FURNITURE TOGETHER WITH THE ASSEMBLY BOLTS «0248 AND 0250»



7

INSTALL THE OVERFLOW PROVIDED (it is advisable to fit the tap immediately after this step)



1 Fit the overflow

2 Screw overflow ring with the key provided

/



CAUTION:
Hand tighten only
Do not forget the seals

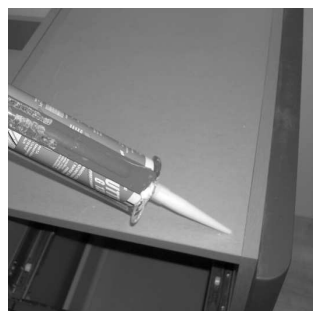
8

REMOVE THE REMOVABLE BACK (basin unit)



9

APPLY A SMALL AMOUNT OF SILICONE ON THE FRONT TOP OF THE UNITS

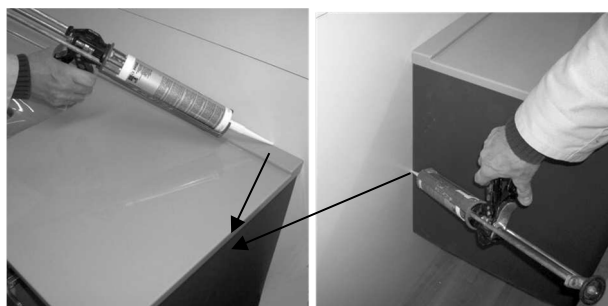


INSTALLATION OF BASIN UNIT

10 INSTALL THE SMO TOP ONTO THE UNIT



11 APPLY A SUITABLE SILICONE SEAL TO ALL EDGES



12 CONNECTING THE PLUMBING, CHECK FOR LEAKS



FAILURE TO APPLY THIS NECESSARY SEAL WILL INVALIDATE ANY PRODUCT WARRANTY

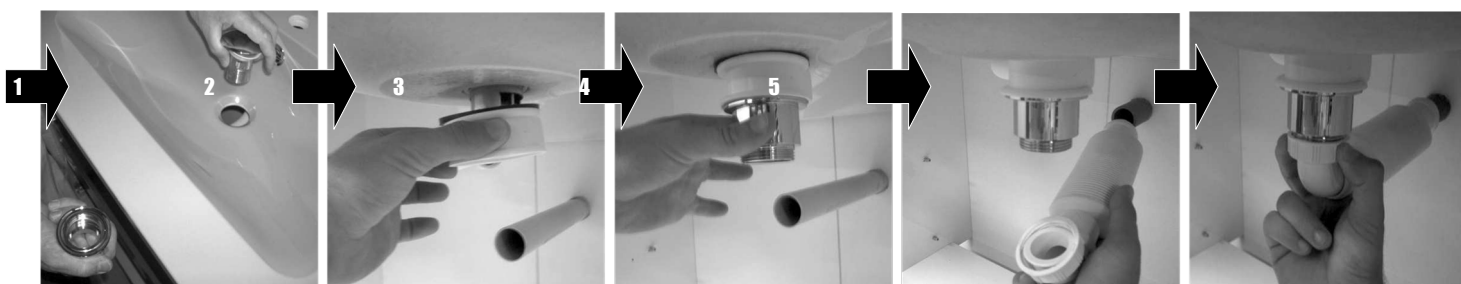
1 Insert the waste (slotted waste) in the hole

2 Connect the overflow to the waste

3 Tighten the waste

4 Connect the trap to the waste pipe

5 Screw the trap to the waste



The connection and elements used are given as an example.



CAUTION:
Hand tighten only
Do not forget the seals

Refit the removable back (cut if necessary)



14 SET AND ADJUST THE DRAWERS, SEE SEPARATE INSTRUCTIONS ATTACHED



Make sure the unit is level so that adjusting is not too difficult

INSTALLATION OF MIRROR

1 FIX THE SCREWS (not supplied)



1 Determine the finished height)

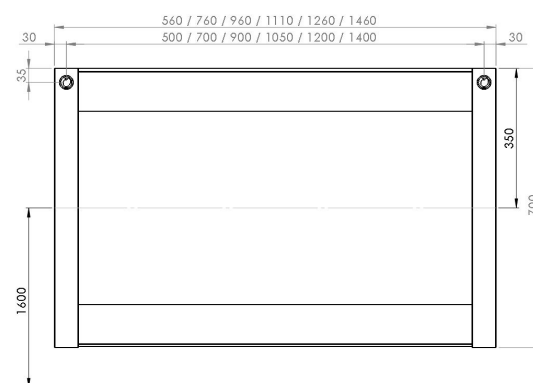
2 Fix the first screw

3 The screw must protrude maximum of 8 mm from the wall



CAUTION:
Ensure that you use
the correct fixing
according to the type
of wall construction.

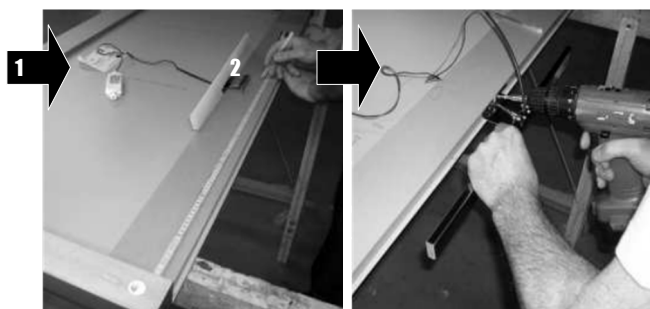
4 Position the second screw aligning it with the first one



All dimensions are in mm.
Recommended height 1600
mm to the centre of the
mirror.

2 lighting option

PREPARATION OF THE ELECTRICAL INSTALLATION

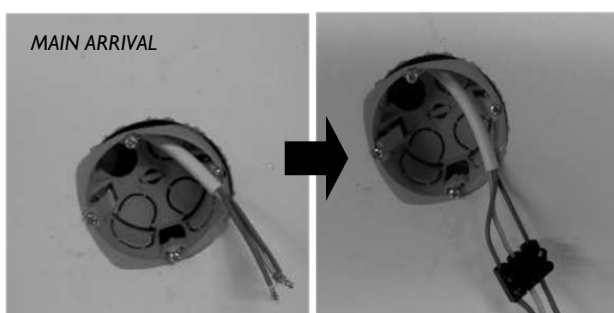


1 Mark the to centre of the mirror

2 Fix the light fitting with the two
screws provided

3 lighting option

CONNECT THE LIGHT TO THE BATHROOM LIGHTING CIRCUIT VIA AN OUTLET PLATE
(according to current regulations, the connection must be made by a qualified electrician)



INSTALLATION OF MIRROR

4

HANG THE MIRROR ONTO THE
SCREWS

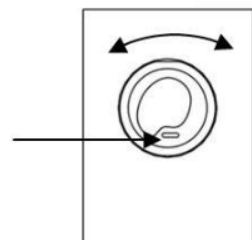


We recommend a silicone spot on each rear bottom corner of the mirror



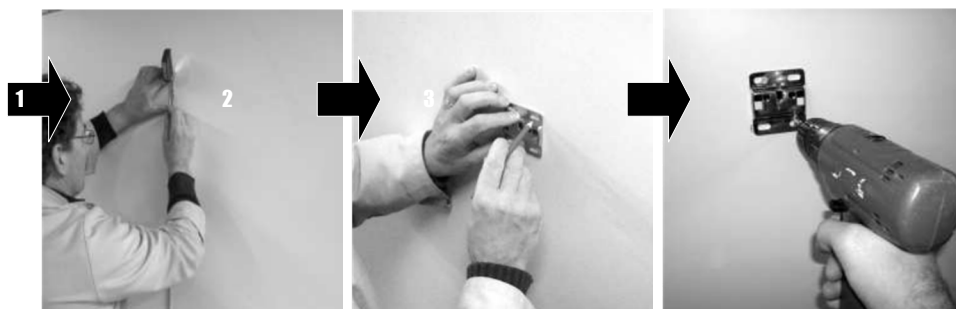
HEIGHT ADJUSTMENT

Insert a
screwdriver into
the rectangular
cutout, then turn
right or left to
adjust the level



INSTALLATION OF TALL UNIT / MIDI UNIT

1 FIX THE WALL PLATES «0271» (screws and wall plugs not included)

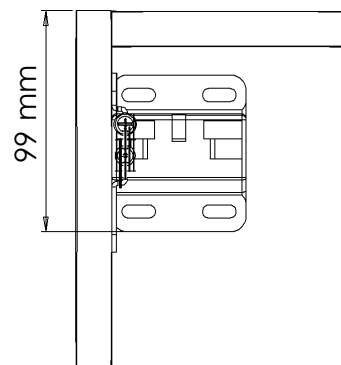


1- Determine the finished height

2- Position the wall plate (see figure), mark and drill

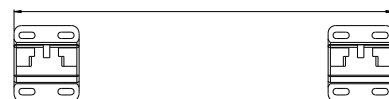
3 Fix the first wall plate

4 Position the second wall plate aligning it with the first one



It is recommended to align the bottom of the tall units and midi units with the bottom of the basin units.

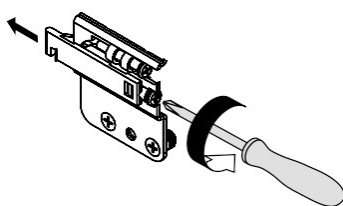
(Total width of the unit) - 34 mm - 60mm



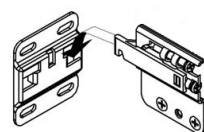
CAUTION:

Ensure that you use the correct fixing according to the type of wall construction.

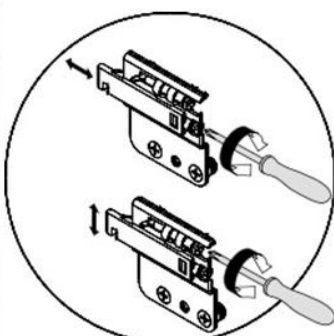
2 LOOSEN THE WALL HANGING BRACKETS ON THE UNIT



3 HANG THE UNITS ONTO THE WALL PLATES



4 ADJUST THE LEVELS AND TIGHTEN THE BRACKETS ON THE UNIT SO THAT THE FURNITURE FITS TO THE WALL



INSTALLATION OF TALL UNIT / MIDI UNIT

5

FIT THE WALL HANGING BRACKET COVERS
«0272 and 0273»



6

FIT THE SMO TOP SHELF (midi unit only)



1 Apply spots of silicone in each corner of the unit

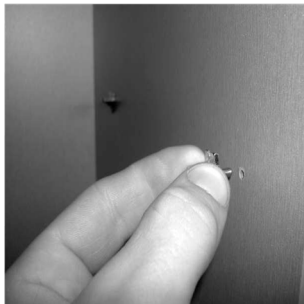
2 Install the SMO shelf

7

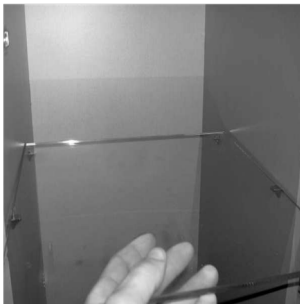
INSTALL UP THE GLASS SHELVES WITH THE PEGS «0185»



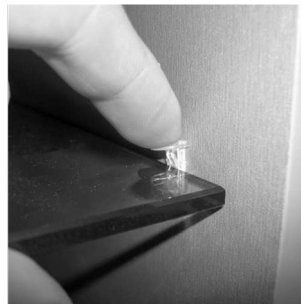
remove the transport pegs and discard



Install the pegs, provided in the spare parts box



Place the shelf onto the pegs.



Push the plastic locking inserts into position.



TO REMOVE YOUR UNIT IF NECESSARY



Push inwards with a screwdriver on the tongue, shaped flap, as shown in picture whilst lifting and pulling unit towards you.



CAUTION :
It requires two people to lift the furniture to avoid any accident.

