

YOKO



FITTING INSTRUCTIONS

IMPORTANT _____ PAGE 1

CABINET

INSTALLATION _____ PAGE 2 A 5

Important :

- Unpack the units carefully ensuring not to scratch them with the knife blade. Inspect every item carefully before installation as no claim for faults or damages will be accepted once the item is installed.
- We recommend that you use protection (for example a blanket) to cover the working area. Mirrors and worktops are very fragile, we recommend that you put them on battens (and never directly onto the floor).
- Our furniture is designed to be fitted on a level, flat finished wall.
- It is imperative that you use a sanitary grade silicone sealant at the back and sides of every worktop as water infiltrations will damage your unit and this is not covered under our product guarantee.
- All surfaces of all units should not be exposed to standing water or persistent humidity. They must be wiped and dried off immediately after use. If your unit is not cared for correctly it will deteriorate and this will not be covered under our product guarantee.
- All our units are guaranteed for 10 years* from date of invoice (1 year for mirrors, electrical items, cisterns, WC frames, sanitary ware, taps and accessories) against all manufacturing defects acknowledged by our company, limited to domestic users.
- The guarantee does not apply to any products that have been misused or abused in any way. The products must be installed and cared for in line with our fitting instructions, local water byelaws, IEE electrical directives and any other applicable regulations.
- In the unlikely event that the product fails within 10 years* (1 year for mirrors, electrical items, cisterns, WC frames, sanitary ware, taps and accessories), we offer a free of charge replacement part (or nearest equivalent). Liability is limited to individual products and does not cover consequential loss/damage or any further unfitting/refitting costs or financial compensation. The customer will be required to pay for the installation cost of the replacement part.

* Refer to general terms of sale

MAINTENANCE:

- Wipe and rinse the surface of the furniture after contact with any chemical product.
- Do not use abrasive cream (cif, etc...), wire wool, scouring pad, solvent, acid, etc...
- Dry the surface off with a soft cloth after cleaning
- For mirrors, use a chamois leather, and dry the edges with a suitable soft cloth.
- Use a dry cloth to clean any electric components, they must be switched off.

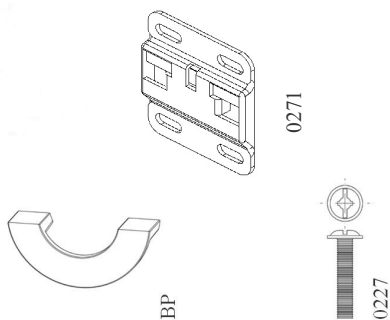
OUR FURNITURE WILL DETERIORATE THROUGH EXCESSIVE WATER SPILLAGE OR HEAVY CONDENSATION. IT IS ADVISED THAT EVERY BATHROOM SHOULD BE WELL VENTILATED AND FITTED WITH A SUITABLE EXTRACTOR FAN TO AVOID ANY PERSISTENT HUMIDITY AND ALL FURNITURE SHOULD BE PROTECTED WITH BATH/SHOWER SCREEN ENCLOSURES TO PRESERVE THEIR QUALITY.

ELECTRICAL INSTALLATION:

All Ambiance Bain units fitted with electrical components (mirrors, mirrored cabinets, sockets, etc...) must only be installed in ZONE 3. Installation and fitting of all electrical items must be completed by a qualified electrician. Any final decisions regarding the installation should also be made by the electrician. All electrical items must be tested prior to installation, as liability is limited to replacement items only.

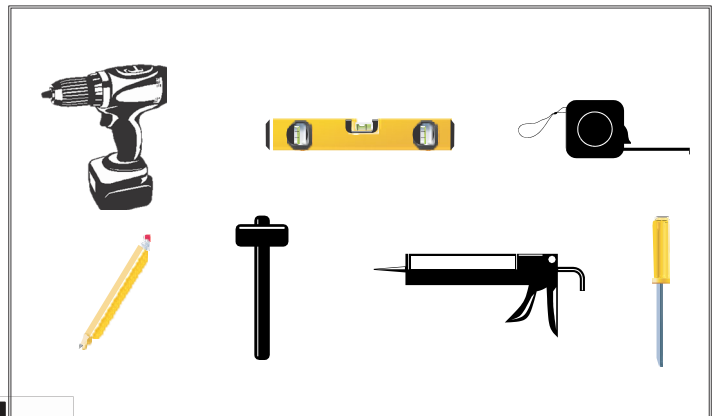
All information is downloadable from the website www.ambiancebain.co.uk

CONTENU DU COLIS DE QUINCAILLERIE / SPARE PART BOX CONTENT



*VÉRIFIER LA QUANTITÉ DANS LE COLIS AVEC LA LISTE
*CHECK SPARE PARTS BOX QUANTITY

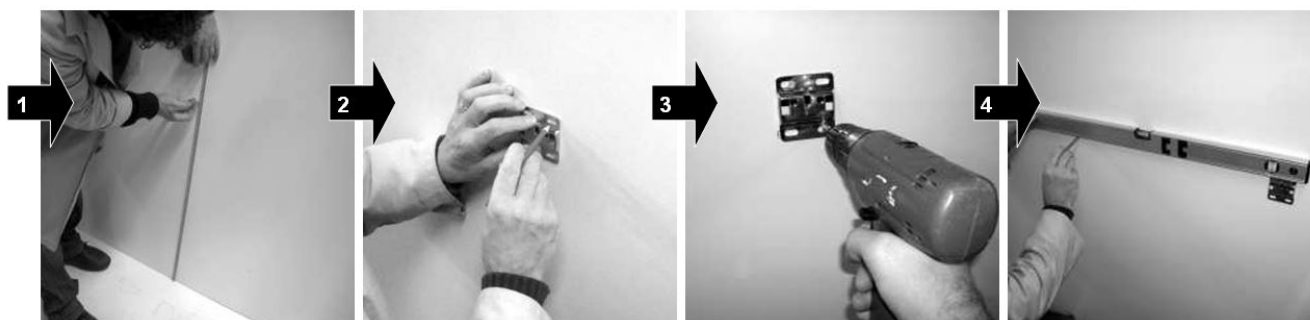
Ab
ambiance bain



/ TOOLS REQUIRED

INSTALLATION OF BASIN UNIT

1. FIX THE WALL PLATES «0271» (screws and wall plugs not included)

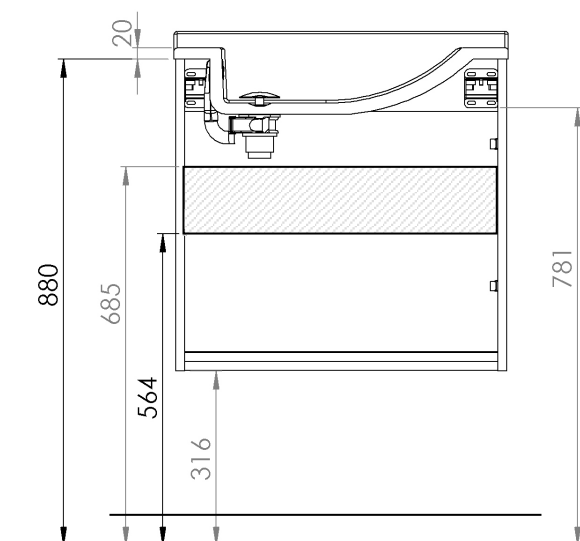


1
Determine the finished height

2
Position the wall plate, mark and drill

3
Fix the first wall plate

4
Place the second wall plate aligning it with the first one



All dimensions are in mm.
The dimensions are given to the bottom of the wall plate.

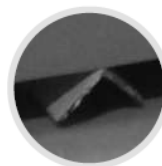
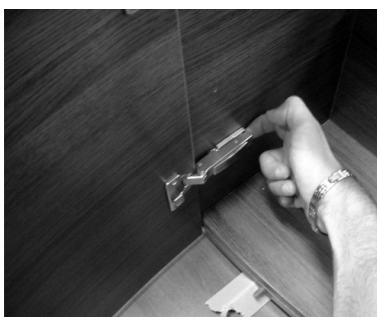


(Width of the unit without curved side panel) - 34 mm



CAUTION:
Ensure that you use the correct fixing according to the type of wall construction.

2. REMOVE THE DOORS, SEE SEPARATE INSTRUCTIONS ATTACHED



CAUTION :
Use wedges to put the unit on the floor

BASIN UNIT INSTALLATION

3.

REMOVE THE REMOVABLE BACK



4.

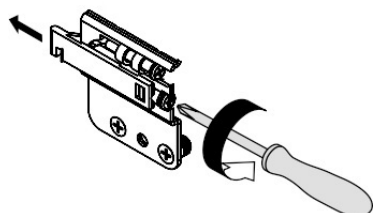
REMOVE THE MELAMINE SHELF



BRACKETS ON THE UNIT

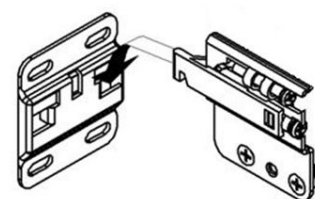
5.

LOOSEN THE WALL HANGING



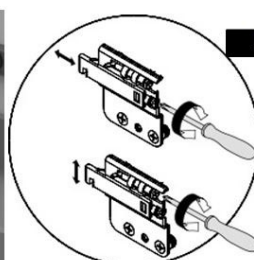
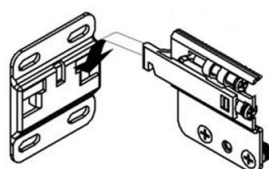
6.

HANG THE UNITS ONTO THE WALL PLATES



7.

FIX THE UNIT ONTO THE WALL



1

Hang the unit onto the wall plates

2

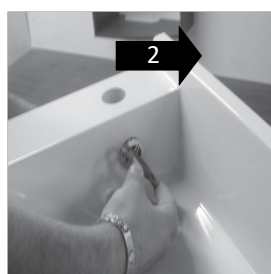
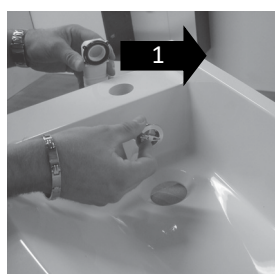
Tighten the brackets on the unit so that the furniture fits to the wall and adjust the levels

3

Fix the additional support to the wall (screw and wall plug not provided)

8.

INSTALL THE OVERFLOW PROVIDED (it is advisable to fit the tap immediately after this step)



1

Set up the overflow

2

Screw overflow ring with the key provided

CAUTION :

Tighten only by hand

Do not forget the seals

BASIN UNIT INSTALLATION

9.

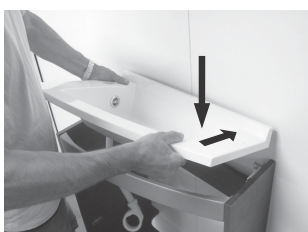
APPLY SILICONE ON TOP ,BOTH SIDES AND ON THE WALL OF THE UNIT(thickness of the worktop)



FAILURE TO APPLY THIS NECESSARY SEAL WILL INVALIDATE ANY PRODUCT WARRANTY

10.

INSTALL THE SMO TOP ON THE UNIT



ADVICE :

Place basin onto unit first then push back to wall. Wipe off any excess silicone.

11.

CONNECTING THE PLUMBING, CHECK FOR LEAKS

1

Insert the drain (slotted waste) in the hole
Not supplied with unit

2

Connect the overflow to the waste

3

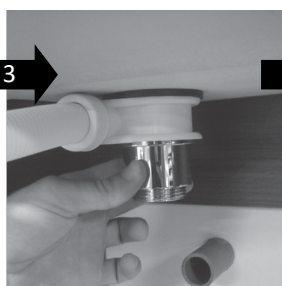
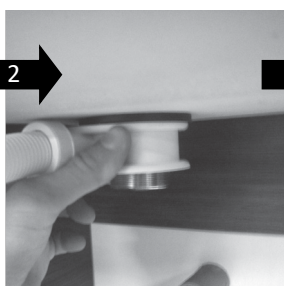
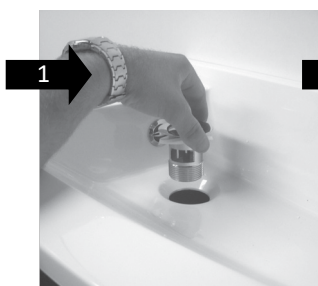
Screw the waste

4

Connect the trap

5

Screw the trap to the waste



The connection and elements used are given as an example.



CAUTION:

Tighten only by hand
Do not forget the seals

BASIN UNIT INSTALLATION

13

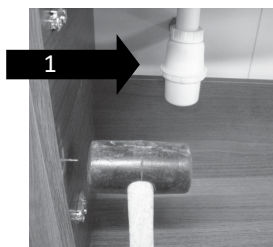
REFIT THE REMOVABLE BACK (cut if necessary)



It is necessary to replace the rear in the opposite direction to that of step 3 so it will sit on the bottom of the unit.

14

INSTALLATION OF MELAMINE SHELF (pegs«0186») (cut if necessary)



1 Fit the pegs provided.



2 Place the shelf on the pegs.

2 Place the shelf on the peg

15

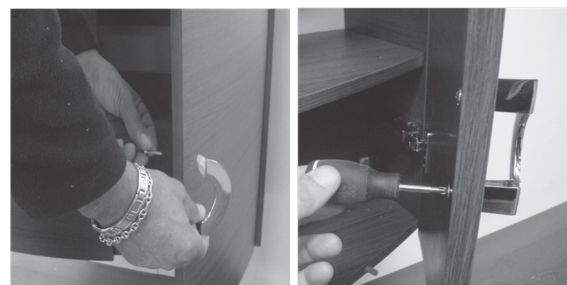
SET AND ADJUST THE DRAWER OR THE DOOR, SEE SEPARATE INSTRUCTIONS ATTACHED



Make sure the unit is level so that adjusting is not too difficult

16

FIT THE HANDLES



*Fix the handle «BP» with the screws «0227»
The fascia is pre-drilled*