



G029V1.1

UK

OPEN SHELF UNIT

FITTING INSTRUCTIONS

Important :

- Unpack the units carefully ensuring not to scratch them with the knife blade. Inspect every item carefully before installation as no claim for faults or damages will be accepted once the item is installed.
- We recommend that you use protection (for example a blanket) to cover the working area. Mirrors and worktops are very fragile, we recommend that you put them on batens (and never directly onto the floor).
- Our furniture is designed to be fitted on a level, flat finished wall.
- It is imperative that you use a sanitary grade silicone sealant at the back and sides of every worktop as water infiltrations will damage your unit and this is not covered under our product guarantee.
- All surfaces of all units should not be exposed to standing water or persistent humidity. They must be wiped and dried off immediately after use. If your unit is not cared for correctly it will deteriorate and this will not be covered under our product guarantee.
- All our units are guaranteed for 5 years* from date of invoice (1 year for mirrors, electrical items, cisterns, WC frames, sanitary ware, taps and accessories) against all manufacturing defects acknowledged by our company, limited to domestic users.
- The guarantee does not apply to any products that have been misused or abused in any way. The products must be installed and cared for in line with our fitting instructions, local water byelaws, IEE electrical directives and any other applicable regulations.
- In the unlikely event that the product fails within 5 years* (1 year for mirrors, electrical items, cisterns, WC frames, sanitary ware, taps and accessories), we offer a free of charge replacement part (or nearest equivalent). Liability is limited to individual products and does not cover consequential loss/damage or any further unfitting/refitting costs or financial compensation. The customer will be required to pay for the installation cost of the replacement part.

* Refer to general terms of sale

MAINTENANCE:

- Wipe and rinse the surface of the furniture after contact with any chemical product.
 - Do not use abrasive cream (cif, etc...), wire wool, scouring pad, solvent, acid, etc...
 - Dry the surface off with a soft cloth after cleaning
 - For mirrors, use a chamois leather, and dry the edges with a suitable soft cloth.
 - Use a dry cloth to clean any electric components, they must be switched off
- OUR FURNITURE WILL DETERIORATE THROUGH EXCESSIVE WATER SPILLAGE OR HEAVY CONDENSATION. IT IS ADVISED THAT EVERY BATHROOM SHOULD BE WELL VENTILATED AND FITTED WITH A SUITABLE EXTRACTOR FAN TO AVOID ANY PERSISTENT HUMIDITY AND ALL FURNITURE SHOULD BE PROTECTED WITH BATH/SHOWER SCREEN ENCLOSURES TO PRESERVE THEIR QUALITY.

ELECTRICAL INSTALLATION:

All Ambiance Bain units fitted with electrical components (mirrors, mirrored cabinets, sockets, etc...) must only be installed in ZONE 3. Installation and fitting of all electrical items must be completed by a qualified electrician. Any final decisions regarding the installation should also be made by the electrician. All electrical items must be tested prior to installation, as liability is limited to replacement items only.

All information is downloadable from the website www.ambiancebain.co.uk

SPARE PART BOX CONTENT

IN BAG : **MPSACHET35 (0167)**



0150



0193



0149

*CHECK SPARE PARTS BOX QUANTITY

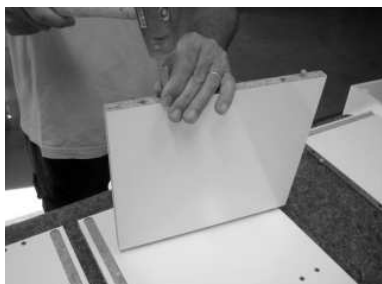


TOOLS REQUIRED

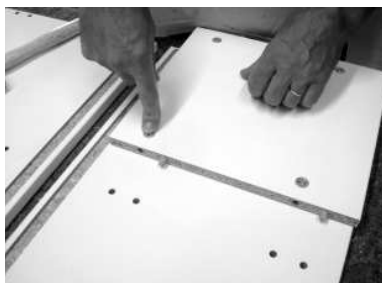


Ab
ambiance bain

- 1** INSERT DOWELS INTO THE TOP, BOTTOM AND MIDDLE SHELF



- 2** PUT THE QUARTER TURNS CAMLOCK INSERTS INTO THE TOP, BOTTOM AND MIDDLE SHELF



CAUTION:
The arrow must
be facing the hole

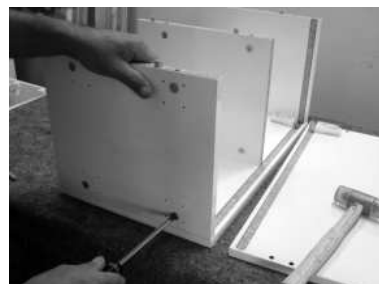
- 3** PUT THE QUARTER TURNS CAMLOCK DOWELS INTO THE SIDE PIECES



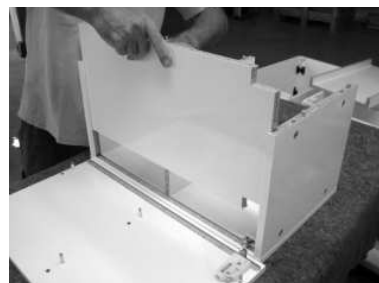
- 4** SET UP THE TOP, BOTTOM AND MIDDLE SHELF



- 5** TIGHTEN THE QUARTER TURN CAMLOCKS



- 6** SLIDE THE REAR PANEL INTO THE GROOVE



- 7** SET UP THE OTHER SIDE



- 8** TIGHTEN THE LAST QUARTER TURNS CAMLOCK



Ab
ambiance bain

www.ambiancebain.com / www.ambiancebain.co.uk

AMBIANCE BAIN - BP206 - 07502 Guilhaud-Granges Cedex - FRANCE AMBIANCE BAIN UK - 15 Cranford Court, Hardwick Grange, Woolston, Warrington, Cheshire, WAI 4RX