

SHOWER WASTE FLUSHSC

SUMMARY

1. Quality standard
2. Product overview
3. Assembly
4. Maintenance/Cleaning

1. Quality standard

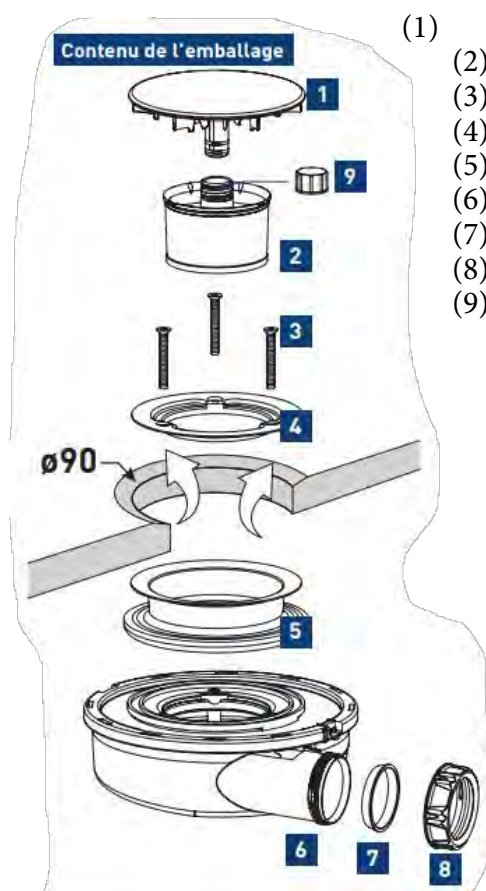
All our products correspond to the active standards related to sanitary furniture, namely NF-22 for bathroom furniture and EN-251 for shower equipment.

2. Product overview

FLUSHSC drain: Extra-flat drain adapted for Ø90mm shower tray, without cover. Ultra fast flow. Horizontal outlet. Double AUTOFIX joint, integrated 2.5 degree slope, high pressure cleaning by extractable bucket. Access to pipes.

3. Assembly

Included :



- (1) Drain cover (Not Included)
- (2) Water guard pipe
- (3) Stainless steel screw M5x40 (x3)
- (4) Stainless steel clamping plate
- (5) AUTOFIX double seal
- (6) Drain body
- (7) Conical seal
- (8) Nut 1 1/2
- (9) Blanking plug

OUTILLAGE NÉCESSAIRE



1/

Place the AUTOFIX seal (5) on the drain body (6)

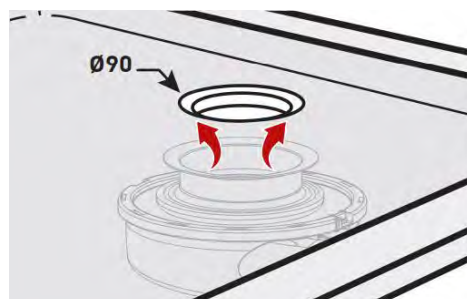


2/



Connect the drain (6) to the drain.
Place the nut (8) on the PVC pipe. **DO NOT FORGET THE CONICAL SEAL (7)**. Screw the nut onto the drain. Make a water test to check that there are no leaks (alternative: glue the PVC pipe to the body of the drain (6)).

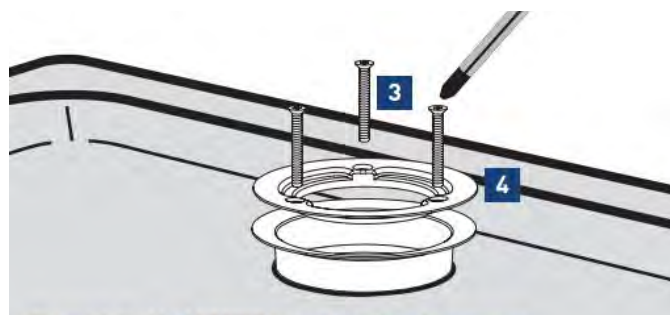
3/



Position the unit on the shower tray.

Silicone Must Not Be Used

4/

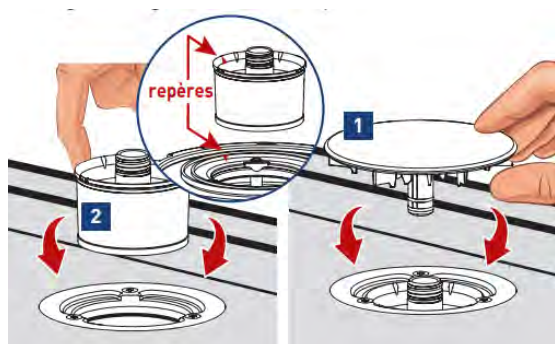


Tighten the stainless steel plate (4) on the drain body (6) with the 3 screws (3)

Recommended tightening torque
3Nm max

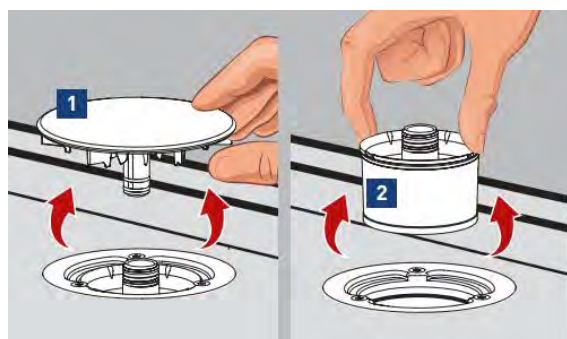
The AUTOFIX seal will compress.

5/



Place the water guard tube (2), position it by aligning the 2 marks (white raised triangle to orange triangle). Insert the cover (1).

4. Maintenance/Cleaning



Lift the bung cover (1)

Remove the siphon tube water guard (2)

Wash it under the tap and then put it back in place by aligning the marks (see step 5)