

## SHOWER WASTE SLIMSC

### SUMMARY

1. Quality standard
2. Product overview
3. Assembly
4. Maintenance/Cleaning

#### 1. Quality standard

All our products correspond to the active standards related to sanitary furniture, namely NF-22 for bathroom furniture and EN-251 for shower equipment.

#### 2. Product overview

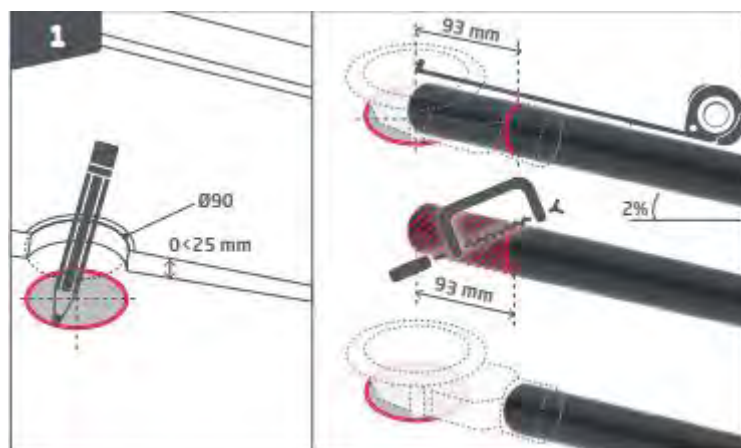
SLIMSC drain: Extra-flat drain adapted for Ø90mm shower tray, without cover. Efficient flow Horizontal outlet. Bi-injected gasket guarantees a 100% watertight installation, integrated slope of 2% for an optimal draining. PP cartridge and anti-odour silicone membrane. Hair filter. Stainless steel tray. Easy to clean. Access to pipes.

#### 3. Assembly

Included :

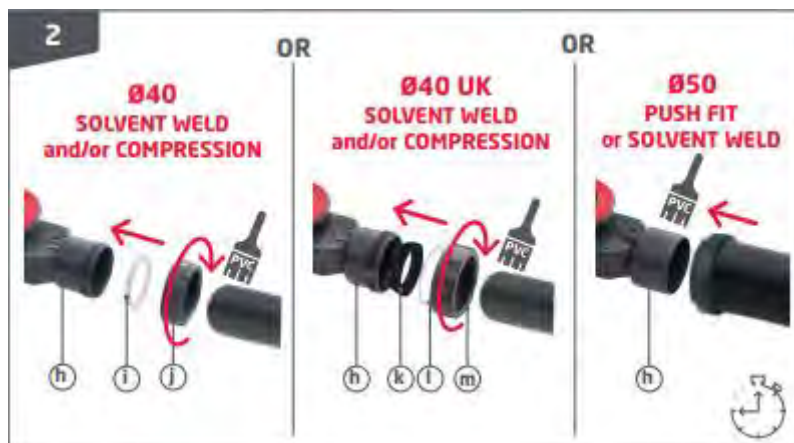


1/



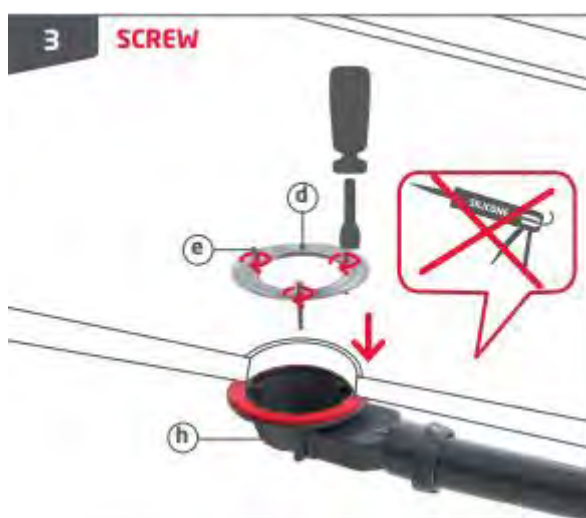
Position the tray as required. Mark the position of the waste under the tray with a pencil. Remove the tray. Define the length and position of the outlet pipe.

2/



Connect the waste (h) to the outlet pipe ensuring a 2% slope : screw fitting and/or glue fixing (PVC glue) for Ø40 outlet, screw fitting and/or glue fixing (PVC glue) for Ø40 UK outlet, or push-fit fitting or glue fixing (PVC glue) for Ø50 outlet. Ensure to observe the glue drying time indicated.

3/



Position the tray. Screw on the metal plate (d) with the screws (e) provided. **SILICONE MUST NOT BE USED !**

4/



The cartridge (c) then the filter (b) must be inserted into the waste (h). **DO NOT THROW AWAY !**

#### 4. Maintenance/Cleaning

To keep your shower drain clear and odour-free, remove, clean and re-insert the hair filter (b) and cartridge (c) regularly. Only clean with soapy water. Pipes accessible with a drain unblocker.