

ADJUSTMENT OF DOORS AND DRAWERS

UK

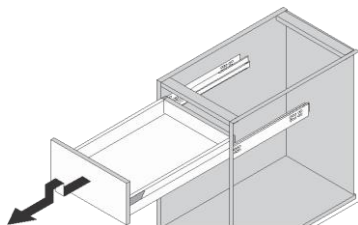
G007V1.2

Once the units are installed check that they are level:

- Fit the drawers and doors - Clip-on adjustment covers
- Adjust the fascias

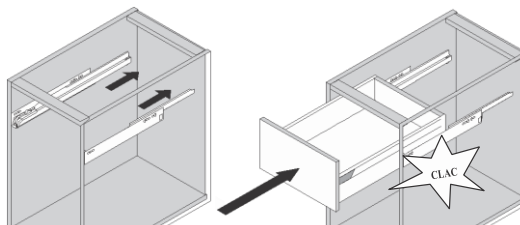
DRAWERS

REMOVING THE DRAWER



Pull; when it is fully open lift and continue to pull gently, following the movement of the arrow.

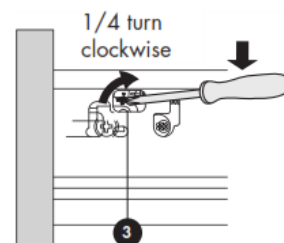
INSTALLING THE DRAWER



Push the runners inside the unit fully

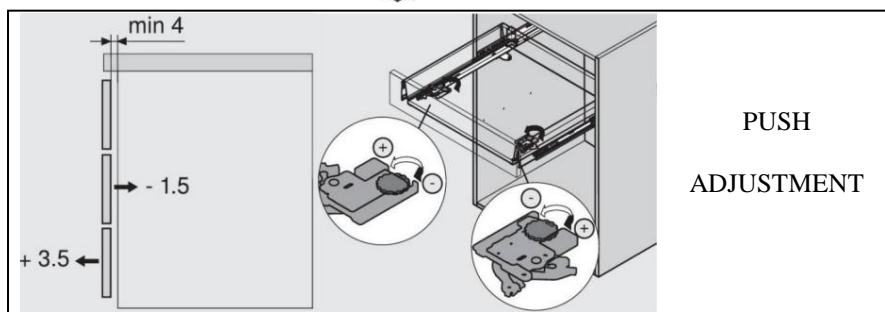
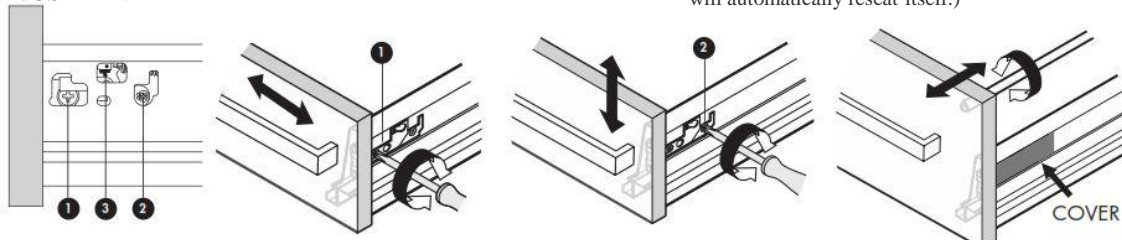
Sit the drawer onto the runners and then, ensuring that it is level, push the drawer in firmly until it locks into position. (It will feel incorrect, but if you open and reclose the drawer it will automatically reseal itself.)

REMOVING THE FASCIA



Insert the screwdriver in the cross slot and lift up the flap

ADJUSTMENT

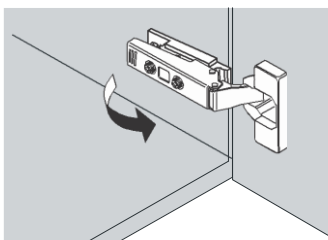


PUSH
ADJUSTMENT

Adjust tall fascias by turning the top bar

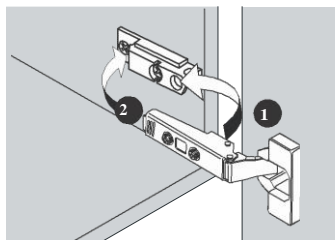
DOORS

UNCLIP

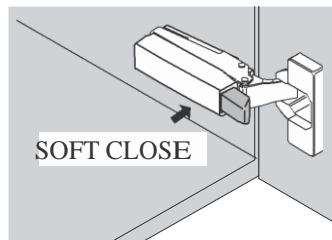


Squeeze the flap at the rear of the hinge and pull forward. Never remove the hinge plates that are screwed onto the carcass

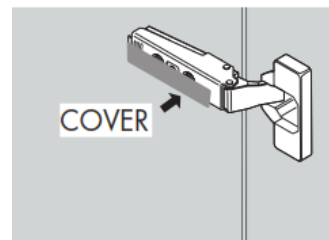
CLIP



Align the bar on the hinge into the groove in the plate (1) and clip the hinge backwards into position (2)



After adjustment, fit 1 soft close per door and not 1 per hinge



After adjustment, fit the Ab covers onto the other hinges

ADJUSTMENT

